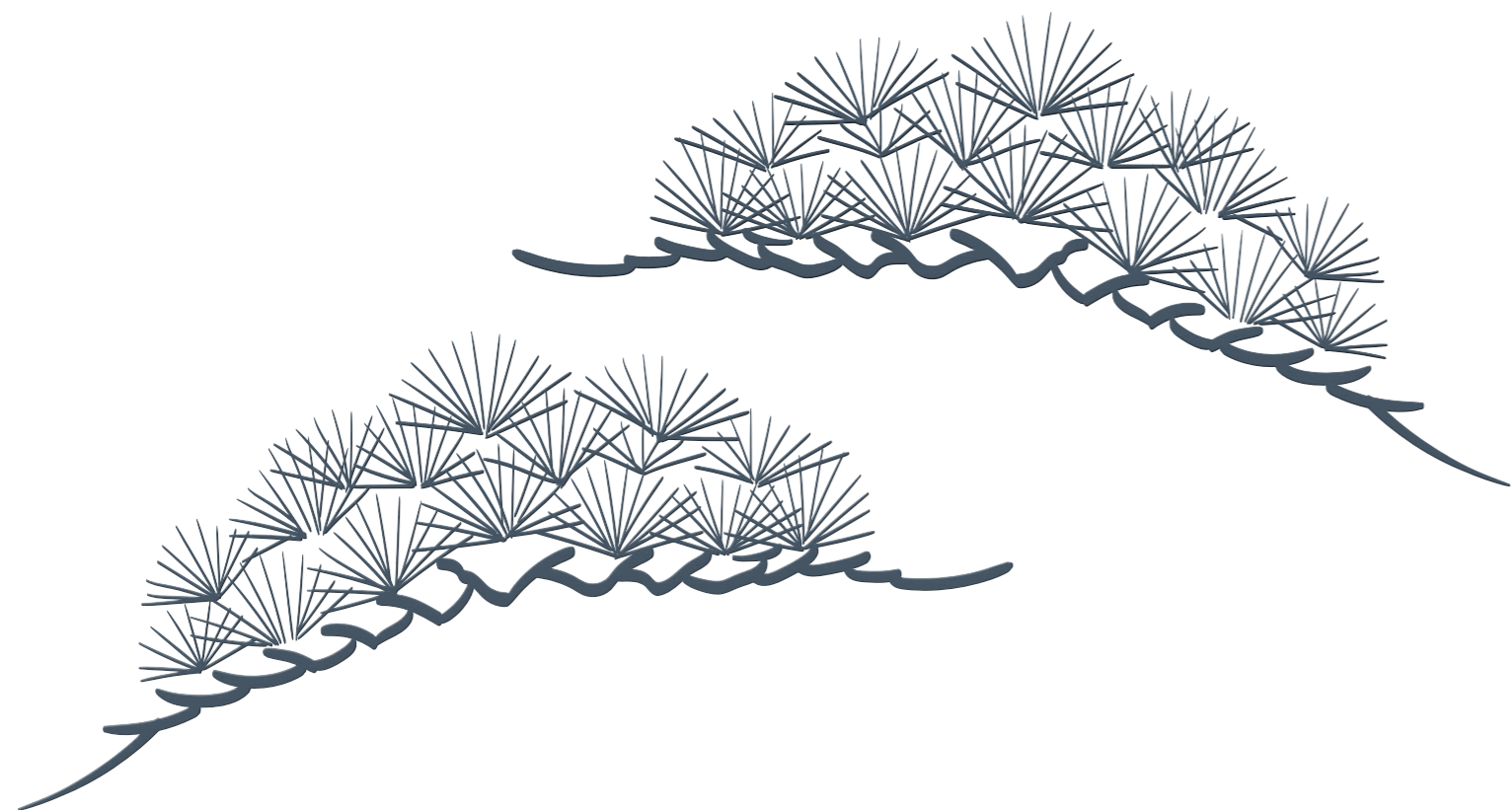


らしのステートメント

ممشى باله

MAMSHA PALM





クワイエット・ラグジュアリー





初

A LIVING STATEMENT



風

和

A LIVING STATEMENT

M
P.O.
和風

紙



IN THE SOUND OF WAVES
THE WIND DANCES THROUGH THE AIR
A SUNSET SKY GLOWS



波の音

自然の教え



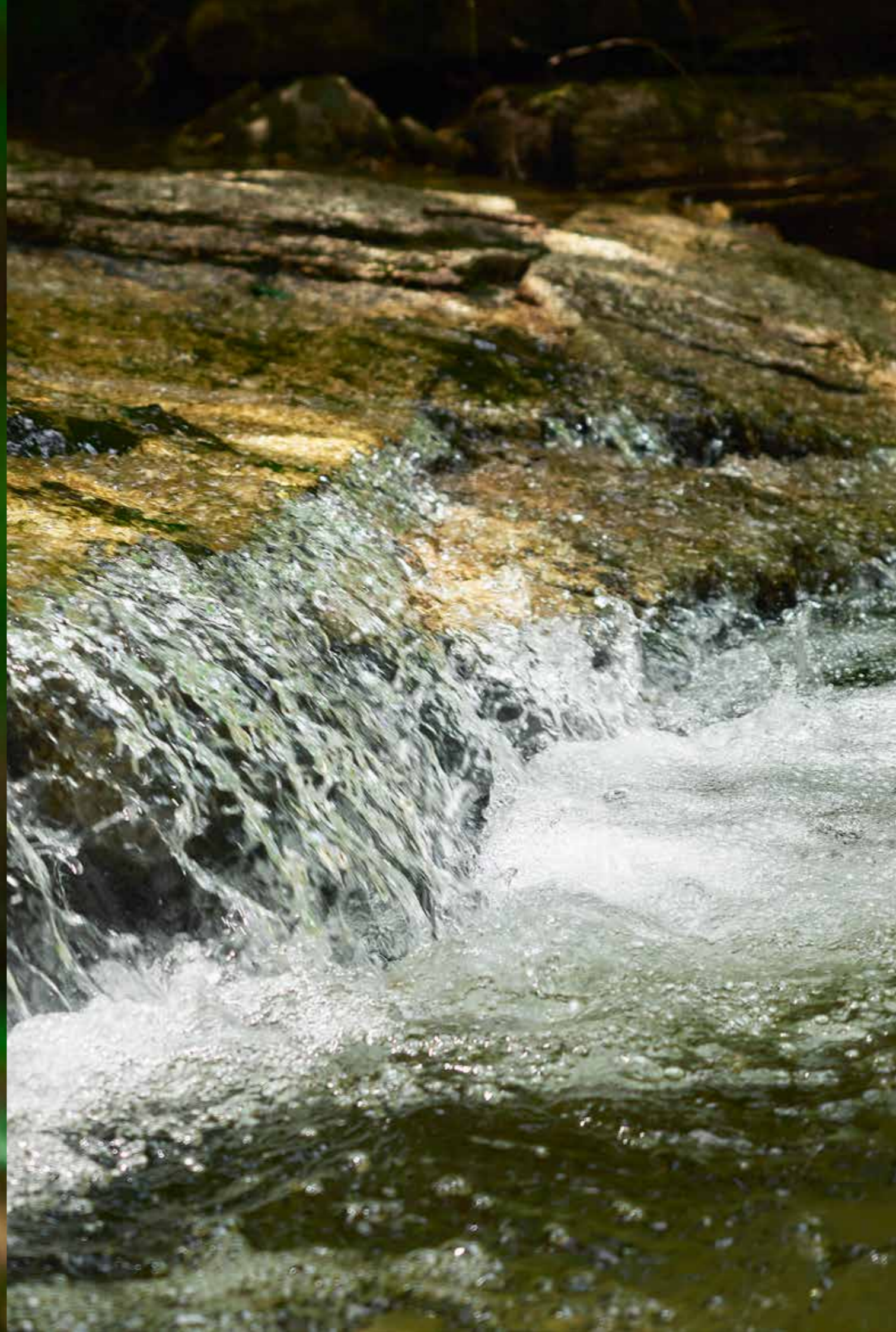


مامشي باله
MAMSHA PALM



DESIGNED BY
ALDAR & KOICHI TAKADA 高田浩一 *Koichi Takada*

本来の建築家



NATURE: THE ORIGINAL ARCHITECT

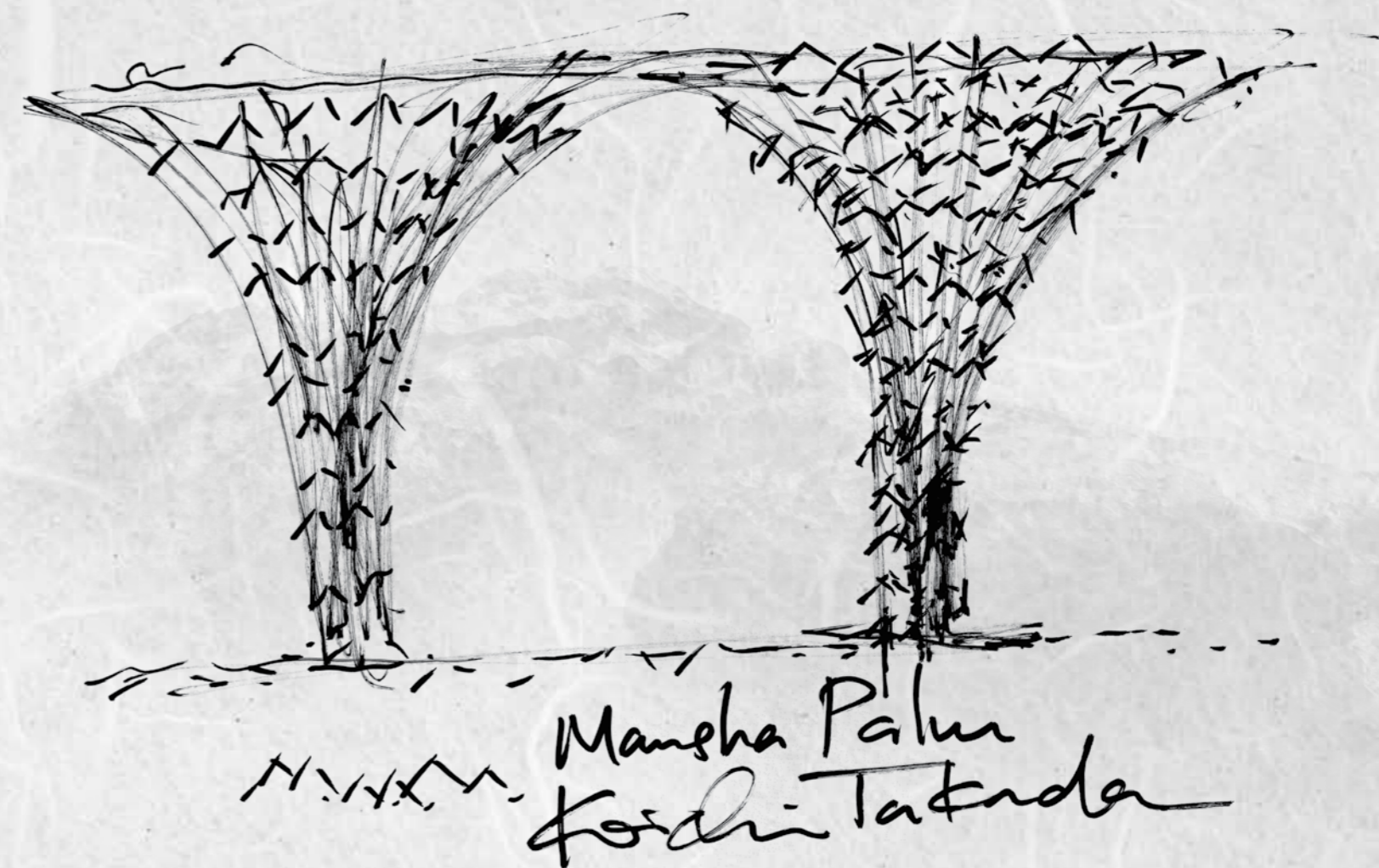


From the intricate veins of a leaf to the gentle ripple of water, nature's design language is unmatched in its elegance. By embracing these timeless design principles, we infuse serenity into our homes, creating environments where people are naturally drawn to live and thrive.

自然とのつながり

"I CRAVE BREATHING SPACE, A CONNECTION
WITH NATURE, WHICH I FIND REFLECTED IN
JAPAN'S RESPECT FOR THE ENVIRONMENT."

—KOICHI TAKADA 高田浩一—



自然とのつながり



“I CRAVE BREATHING SPACE, A CONNECTION
WITH NATURE, WHICH I FIND REFLECTED IN
JAPAN’S RESPECT FOR THE ENVIRONMENT.”

—KOICHI TAKADA 高田浩一





KOICHI TAKADA
高田浩一



DESIGNED BY **KOICHI TAKADA**

For architecture that flows from the depths of nature's wealth, Aldar turned to **Koichi Takada**. Every curve and line in his design mirrors the efficiency and serenity of the natural world. He creates living architecture—structures that adapt, evolve, and connect deeply with their environments. By blending the wisdom of tradition with modernity, Takada crafts spaces that foster profound emotional connections.

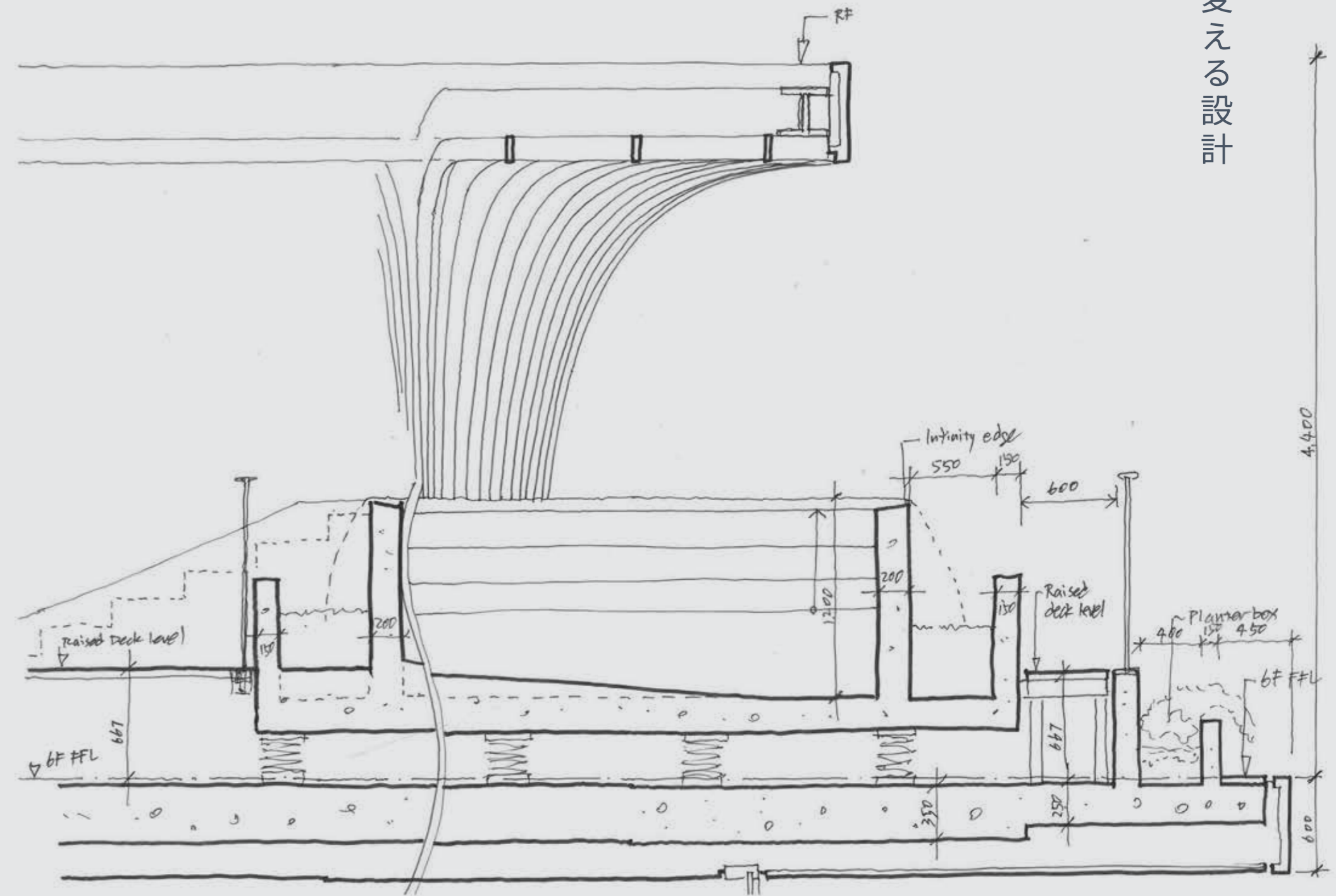


“ADAPTABILITY IS CRUCIAL IN WHAT I CALL 'BIOMETRIC ARCHITECTURE', WHERE BUILDINGS ARE DESIGNED TO INTERACT WITH AND RESPOND TO THEIR ENVIRONMENT DYNAMICALLY.”

"WE NEED TO BELIEVE
THAT DESIGN CAN
CHANGE THE WORLD."

—KOICHI TAKADA 高田浩一

世界を変える設計



“I LOVE INTRODUCING NATURAL ELEMENTS LIKE
LIGHT AND AIR INTO URBAN SETTINGS
TO CREATE A CONNECTION WITH NATURE.”

—KOICHI TAKADA 高田浩一

和風

M
P.O
和風







LIVING IN THE SHADE OF A PALM



Biophilic design weaves throughout Mamsha Palm—inspired by the protective canopy of palm trees that cools its surroundings. The residence becomes an artistic recreation of the canopy, providing dappled shade and shelter from the Middle Eastern sunlight.

アイコンニックな設計
QUIETLY ICONIC



“I’VE LEARNED TO ADAPT AND
EVOLVE — JUST LIKE NATURE.
OUR ARCHITECTURE
SHOULD DO THE SAME.”

—KOICHI TAKADA 高田浩一—



ELEMENTS ALIGN
WITHIN THE MIND’S EYE BEFORE
A SINGLE LINE’S DRAWN



適応と進化



FROM THE
PEOPLE
WHO CRAFT
COMMUNITIES



Aldar is the UAE's most trusted real estate and lifestyle creator. The art of living is our canvas. We go beyond the tangible. We sculpt spaces that house dreams, where every corner whispers inspiration.

均衡の美学

THE ART OF
BALANCED LIVING



Abu Dhabi's tranquil coastline, rich heritage, and vibrant business landscape create a city in perfect harmony. It's a place where the world converges to experience a lifestyle that is both invigorating and serene. The city balances the energy of modern life with the calm of tradition.



アブダビ
ABU DHABI

均衡の美学

THE ART OF
BALANCED LIVING



Abu Dhabi's tranquil coastline, rich heritage, and vibrant business landscape create a city in perfect harmony. It's a place where the world converges to experience a lifestyle that is both invigorating and serene. The city balances the energy of modern life with the calm of tradition.

Abu Dhabi



ABU DHABI
アブダビ

FORTY-FOUR EXCLUSIVE RESIDENCES



Mamsha Palm presents a rare collection of 1-bed, 2-bed + study, 3-bed residences and elegant sky villas, with refined finishes and spacious layouts. These homes are crafted to embrace the breathtaking views of Saadiyat Island's cultural treasures and the endless sea.





TRADITIONAL JAPANESE TEA ROOM

Find serenity as you gather
in a tranquil ambiance.



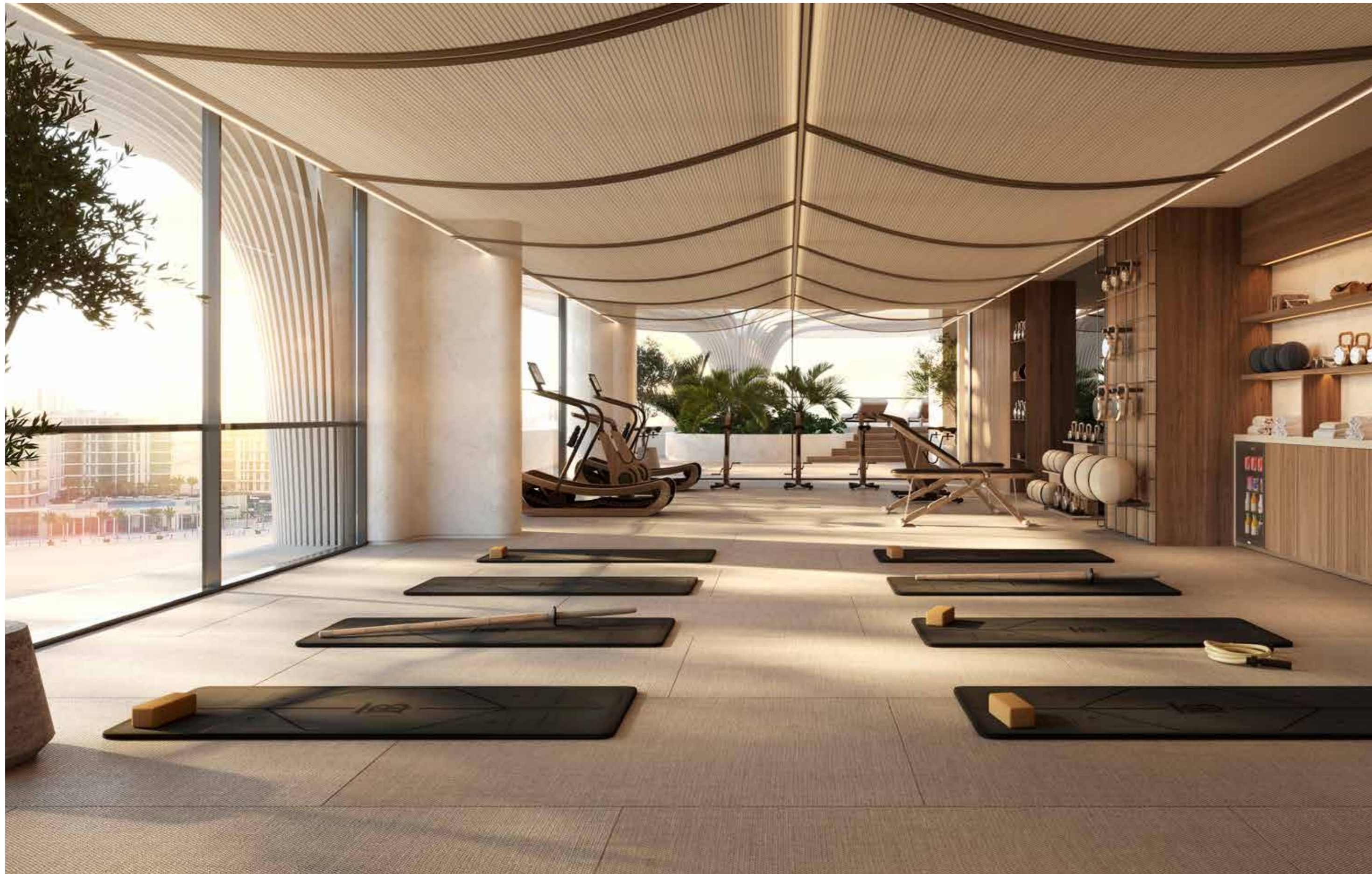
和

M
P.O
和風

GYM

Discover your balance and connect with your inner self.

ヨガの空間



TRADITIONAL
JAPANESE
BATHHOUSE

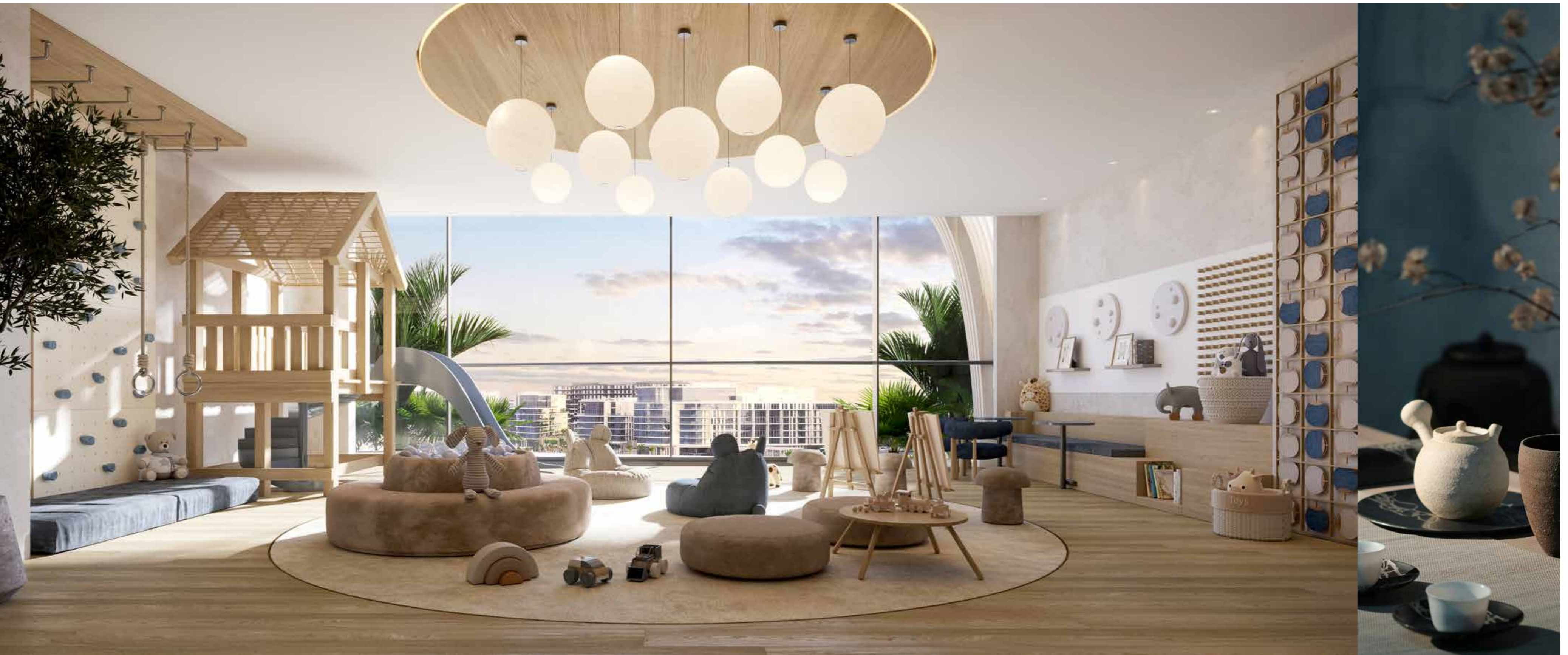
Soak away the stresses of your day
in serene surroundings.

浴場



CHILDREN'S
PLAY ROOM

A world of discovery for the little ones.



プレイルーム



ELEVATED
INFINITY
POOL

Take a dip in the sparkling waters
overlooking all of Saadiyat.

インフィニティ



FINISHES



SHOWER WALL, NICHE
& KITCHEN BACKSPLASH
PORCELAIN TILE



KITCHEN TOP CABINET,
BATHROOM VANITY
FLUTED WOOD



KITCHEN & BATHROOM
COUNTERTOP, BATHTUB
ENGINEERED STONE



WALLS & CEILING
PAINT



EXTERNAL KITCHEN CABINET
PORCELAIN TILE



INTERNAL KITCHEN CABINET
BACKPAINTED GLASS



GENERAL FLOOR, BATHROOM
WALL & FLOOR
PORCELAIN TILE



BEDROOM FLOOR
ENGINEERED WOOD



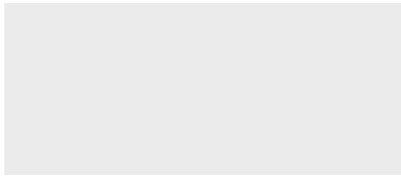
WARDROBE DOOR
FABRIC LAMINATED GLASS



SHOWER ENCLOSURE
SATIN GLASS



WARDROBE, MAIN, INTERNAL DOORS
LAMINATE



SANITARY WARE
CERAMIC



WARDROBE DOOR
LINEN LAMINATE



WARDROBE CARCASS
LEATHER



SANITARY & HARD WARE
BLACK METAL BRUSHED





FLOOR
PLANS

住

M
P.O
和風

間
取
り
図



I - BR TYPE 1



I - BR TYPE 2



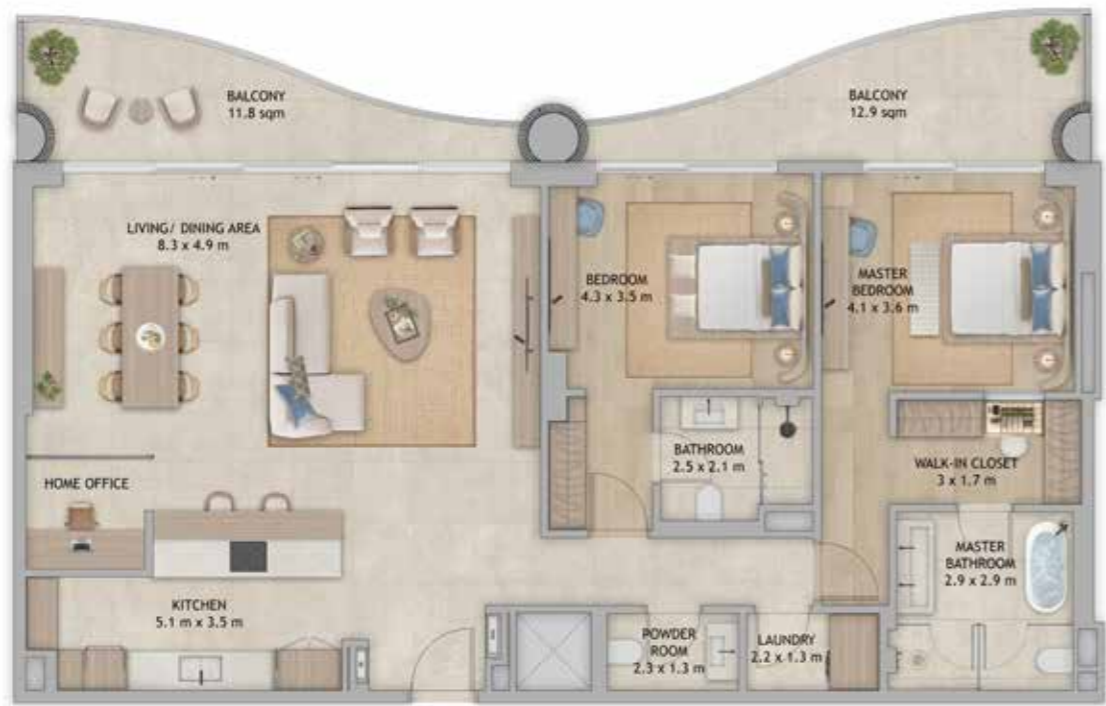
1 - BR TYPE 3



2 - BR TYPE 1



2 - BR TYPE 2



リ
フ
レ
ッ
シ
ュ



2 - BR TYPE 3



3-BR + MAID TYPE 1



3-BR + MAID TYPE 2



4-BR + MAID DUPLEX
LOWER LEVEL



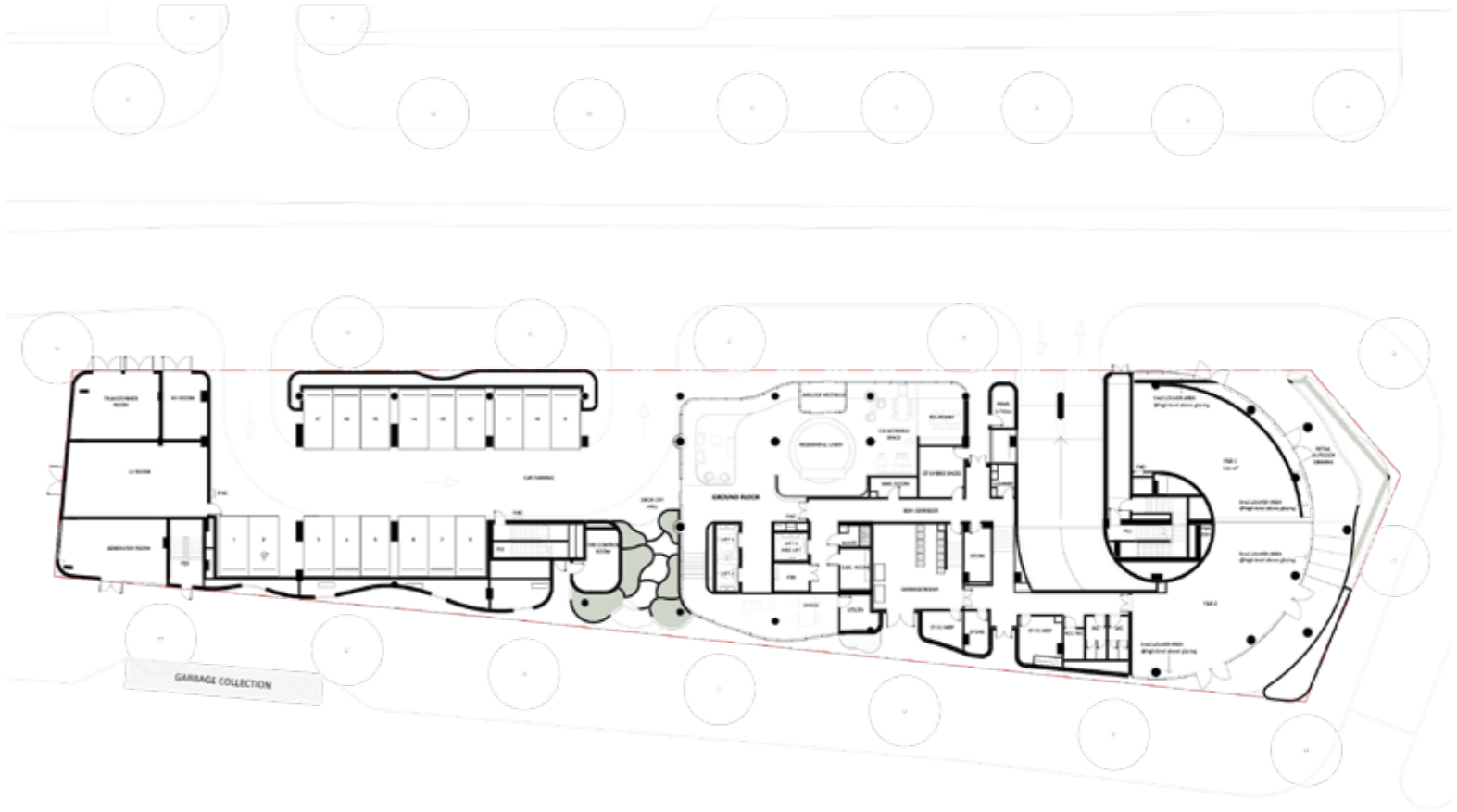
4-BR + MAID DUPLEX
UPPER LEVEL





FLOOR
PLATES

GROUND FLOOR



LEVEL 01



LEVEL 02



LEVEL 03



LEVEL 04



LEVEL 05



LEVEL 06



BASEMENT 01



BASEMENT 02





初

M
P.O
和風

風



