

NOBU
RESIDENCES
ABU DHABI



An aerial photograph of a beach with two people sitting on the sand near the water's edge. The water is a vibrant turquoise color, and the sand is a light beige. The text "AN ARTFUL COMBINATION OF NATURE AND CULTURE" is overlaid in white, uppercase letters in the center of the image.

AN ARTFUL
COMBINATION
OF NATURE
AND CULTURE

NOBU RESIDENCES ABU DHABI

A peaceful haven on Saadiyat Island. In a beautiful beachside location overlooking the Guggenheim Abu Dhabi Museum and the azure sea, this collection of only 88 elegant homes brings together pristine architecture and interior design, along with a wide range of carefully selected amenities and services from the celebrated Nobu brand. Chef's Nobu culinary art and soul are eloquently expressed in a signature residence kitchen bringing to life a masterful balance of traditional craft, contemporary design, and curated details.





*AT THE HEART OF
THE CULTURAL DISTRICT*

WHERE DEEP CONNECTIONS ARE FORGED

Nobu Residences Abu Dhabi has a passionate commitment to the art of hospitality. With 30 years of success in the industry, Nobu has more than 55 restaurants, 38 hotels, and 12 residences worldwide, all of which follow the Japanese concept of kokoro, a convergence of emotions, feelings, spirit and soul.



INSPIRING COMMUNITIES

As a creator of world-class experiences across the UAE, Aldar is one of the region's most successful development and management companies. Working with some of the world's leading cultural institutions and hospitality brands, Aldar is developing residential, mixed-use and commercial assets in Abu Dhabi, Dubai and Ras Al-Khaimah.



A man in a white chef's uniform with blue piping and a name tag that says "Fatima" is shown in profile, looking towards the right. The background is a dark cityscape at night, with numerous vertical light streaks from buildings, creating a bokeh effect. The overall mood is contemplative and professional.

A SHARED VISION

Nobu Residences Abu Dhabi is the shared vision of Aldar, Nobu and a team of world-class architects and designers. Working closely together, sharing ideas, experience and expertise, the team has created a flawless piece of architecture, with free-flowing interiors and a complementary palette of natural materials and finishes.



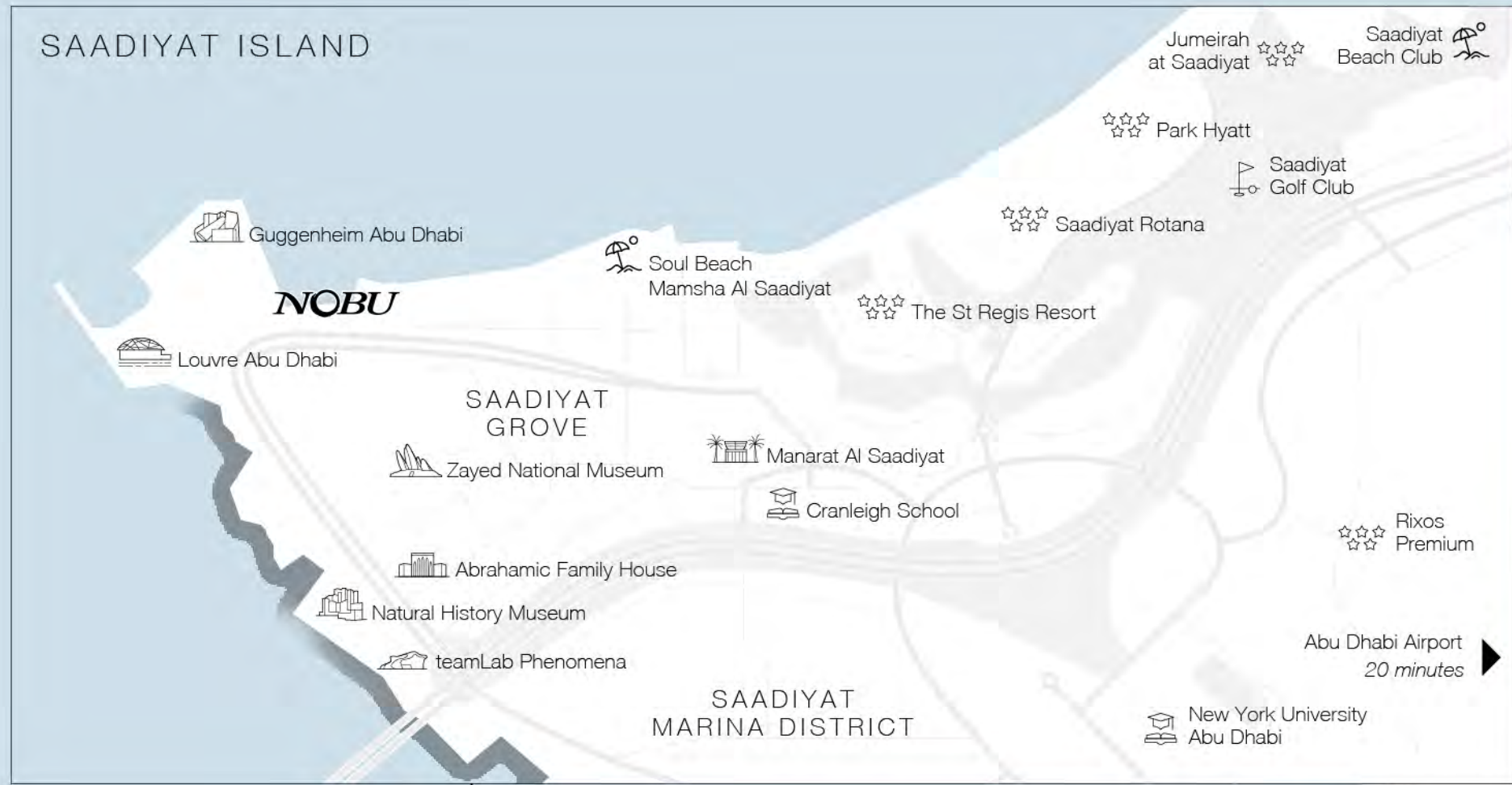
A NATURAL EXPRESSION OF BEAUTY AND VITALITY

Entwining ancient traditions of hospitality with a contemporary approach to design, these exquisitely curated residences are a sanctuary for the senses. With interiors inspired by natural textures and colours, Nobu's signature style is featured throughout the one-to-three-bedroom residences, two-bedroom lofts, and sky villas and penthouses.

A woman with long dark hair, wearing a grey abaya, stands on a sandy dune. She is looking out over the ocean towards a sunset. The sky is a warm, golden color, and the water is a deep blue-green. The foreground is filled with tall, dry grasses. The overall mood is serene and contemplative.

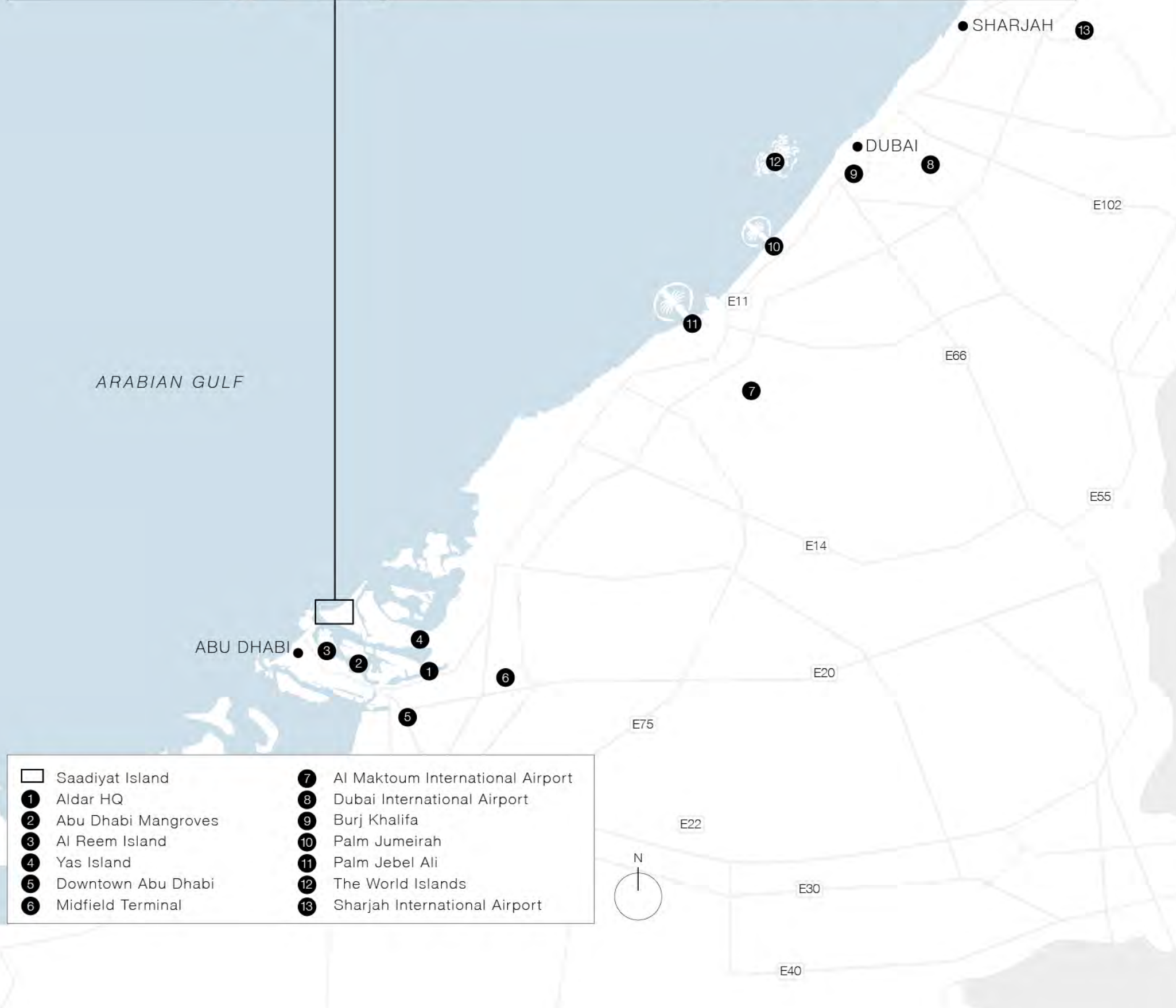
A WORLD OF POSSIBILITIES

Abu Dhabi is a land where nature, history and culture come together in one dazzling location. It's a dynamic city, a breathtaking coastal resort and a desert oasis all in one unique offering. Travellers have long been drawn by its beauty and charm, and today Abu Dhabi offers a world of modern attractions and adventures.



WHERE NATURE AND CULTURE MEET

Saadiyat Island is not only a natural haven, it's also home to an array of the world's most prestigious cultural institutions including the Louvre Abu Dhabi, Guggenheim Abu Dhabi, Zayed National Museum, Abrahamic Family House, Natural History Museum and teamLAB Phenomena. The local flora and fauna on Saadiyat Island offer an equally colourful and vivid spectacle. The wildlife includes birds such as lapwings and herons, along with gazelles, dolphins and turtles, many of whom inhabit the extraordinary mangroves that are such an important protected feature of the UAE.



- ☐ Saadiyat Island
- ① Aldar HQ
- ② Abu Dhabi Mangroves
- ③ Al Reem Island
- ④ Yas Island
- ⑤ Downtown Abu Dhabi
- ⑥ Midfield Terminal
- ⑦ Al Maktoum International Airport
- ⑧ Dubai International Airport
- ⑨ Burj Khalifa
- ⑩ Palm Jumeirah
- ⑪ Palm Jebel Ali
- ⑫ The World Islands
- ⑬ Sharjah International Airport



A close-up photograph of a woman with her eyes closed and hands pressed together on her forehead, suggesting a meditative or serene state. She is wearing a dark top and a small hoop earring. The background is a soft-focus outdoor scene with water and foliage. The text 'FIND SANCTUARY...' is overlaid in white, italicized font on the lower left side of the image.

*FIND
SANCTUARY...*

CELEBRATE LIFE

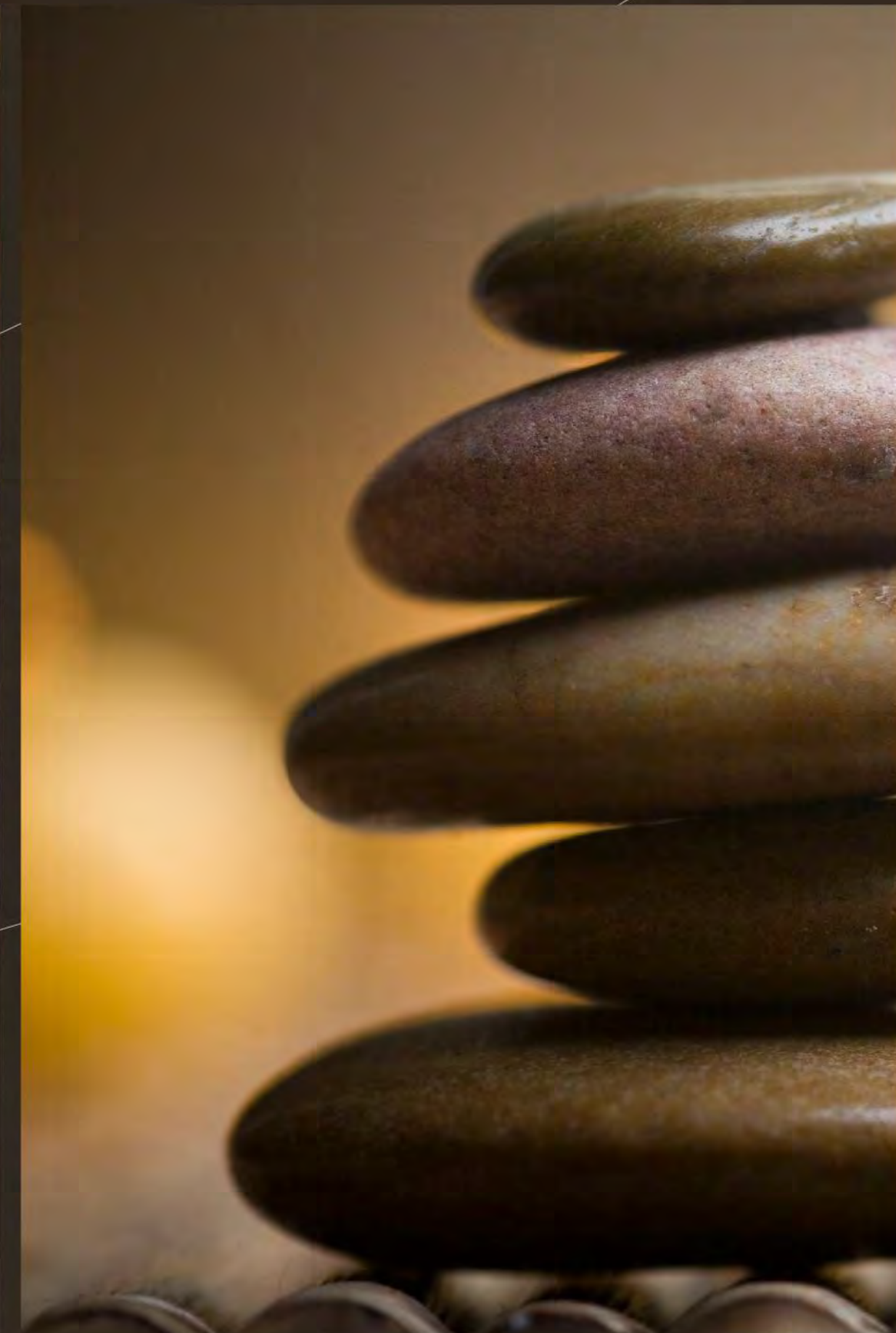
Nobu Residences Abu Dhabi brings together elegant design, exclusive amenities and a true sense of luxury. These are wonderful places to be, whether relaxing with family or welcoming good friends. In times of celebration, residents have exclusive access to a range of exquisite event spaces, in both the Residences and the Nobu Hotel.





CRAFTSMANSHIP AND CURATED DESIGN MASTERY

Designed in collaboration with Chef Nobu, the signature kitchen is a tasteful expression of a life of distinction. The curated blend of contemporary Japanese wooden elements and Arabic inspirations grace Italian-designed furniture bringing the chef's kitchen mastery to life.



SANCTUARY FOR THE SENSES

An exquisitely handcrafted wooden bathtub from Tokyo, Japan, marks the carefully curated bathroom's signature piece. Establishing a serene sanctuary for residents' immersive bathing rituals and blending tradition and meticulous details to evoke a tranquil ambiance.



DESIGN WITH
AN INSPIRED
TOUCH

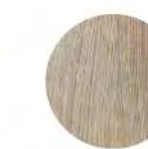
At Nobu Residences, Abu Dhabi, beauty and tactility go hand-in-hand. Traditional craftsmanship features in the warmth of wood, the cool of stone and the intricacy of glass. The careful application of contemporary materials, including leather, linen and metal, adds intrigue as well as practicality while subtle lighting throughout each residence brings atmosphere and sophistication.

RESIDENCES FINISHES

High-end selection of robust and luxury finishes
Inspirations: Contemporary Arabic (Emirati)
and modern Japanese architecture



Floor tiles
porcelain



Bedroom floor
engineered
oak wood



Walls limewash
paint



Bathroom wall
porcelain tiles



Internal & external
doors white oak
wood veneer



Bedroom wall
wallpaper



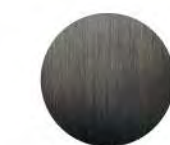
CHEF'S KITCHEN

Designed in collaboration with Chef Nobu, the signature kitchen lies at the heart of every residence. His culinary art and soul are eloquently expressed through a perfect balance of traditional craft, contemporary appliances, and generous cooking and entertaining spaces. Sleek contemporary Japanese wooden slats grace Italian-designed cabinets with leather and steel handles.

KITCHEN FINISHES



Countertop & backsplash quartzite stone



Sanitaryware & accessories brushed metal



Cabinetry & island oak wood veneer



Cabinetry glossy lacquer



Upper cabinetry clear glass

Chef's kitchen designed in collaboration with Chef Nobu and inspired by contemporary Arabic (Emirati) and modern Japanese architecture

High-end Italian brands specialised for kitchen appliances:

- Panelled refrigerator and freezer
- Hoodless oven
- Built-in automated dishwasher

Custom-made designer cabinets with metal/leather handles

Warm LED-lit glass cabinet

Sleek, user-friendly extendable kitchen sink mixer

Internal storage organisation:

- Under sink bin organisation
- Magic corner storage
- Linear cabinet storage tray built-in

Kitchen cabinets curated by Italian manufacturers with Japanese-style wooden slats

Built-in signature features:

- High-end knife rack
- High-end chopping board/tray

Countertop in quartzite stone

*HARMONIZING
HERITAGE AND
LUXURY*





IMMERSED
IN THE MOMENT

Traditional bathing rituals are observed in the residence bathrooms, with designs inspired by Arabic hammams and Japanese onsens (mineral-rich hot springs). Handcrafted Japanese bathtub with rich high end teak wood elements are the centrepiece of the primary bathrooms accompanied by powerful rain showers and tactile quartzite countertops. These are spaces that can be both invigorating, for morning rituals, and indulgent, for long evening soaks.

BATHROOM FINISHES



Bathtub & vanity
joinery teak wood



Wall tiles
porcelain



Vanity countertop
quartzite stone



Sanitaryware &
accessories black
brushed metal



Floor tiles
porcelain



Upper cabinetry
clear glass

Luxury traditional Japanese curated bathtubs
with wooden teak elements

High-efficiency top-of-the-line American sanitaryware

Rain shower experience in master bathrooms

Secondary bathrooms equipped with multifunction
hand showers (3-spray)

Anti-slip safety tiles in the showers

All finishes in warm tones with rich teak wood
and quartzite stone elements



ALL BEDROOMS

High-end engineered wooden flooring for bedrooms

MASTER BEDROOM

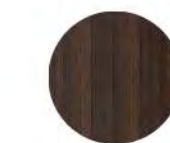
Recessed LED profile

Pull-out trouser hanger

Electronic safe

Jewelry drawer

WARDROBES



Door profile
eucalyptus wood



External finish
typical bedroom
vanilla linen fabric



External finish
master bedroom
green linen fabric

High-end built-in/walk-in wardrobes manufactured by luxury Italian brands

Designer metal/leather handles with removable hanger holder

Eucalyptus wood door profiles

Externally finished in vanilla or green linen fabric

SUSTAINABILITY BUILT-IN

At Nobu Residences Abu Dhabi, sustainability is seamlessly integrated into every aspect of the project, creating a harmonious blend of environmental stewardship and exceptional guest experiences. Its strategy encompasses several key elements resulting in significant energy and water conservation and enhanced energy efficiency. In construction and operation, the Residences conforms to Estidama, a key driver of the Abu Dhabi Vision 2030 sustainability programme.





LIFE-ENRICHING AMENITIES IN AN ENCHANTING SETTING

This is more than a distinguished home, it's a life-enhancing experience. With a focus on wellbeing and relaxation, the exclusive resident amenities are inspired by the natural beauty of this remarkable land. Here, everything is taken care of, with a level of personal service that is second-to-none. Private dining, with Nobu-trained chefs, and outdoor terraces offer rich opportunities for atmospheric celebrations. An elegant spa, outdoor pools and a serene Zen Garden promote calmness and tranquillity. Just next to the Residences, the stunning Nobu Hotel is home to almost 5,000 sqm of luxurious amenities, including one of the region's most exclusive rooftop bars and a world-renowned Nobu Restaurant.





HOTEL & RESIDENCES AMENITIES

HOTEL RESIDENCES AMENITIES

All residents at the Nobu Hotel will have access to the range of amenities at the Hotel premises:

- Grand lobby lounge
- A range of F&B venues including a Nobu Restaurant
- Outdoor adult and kids' pools with cabanas
- State-of-the-art gym
- Rooftop bar
- Spa facility with steam room and sauna at the Hotel
- Ballroom & conference facilities
- Direct access to the beach

RESIDENCES AMENITIES

All residents at the Nobu Residences will have access to the range of amenities at the residential premises:

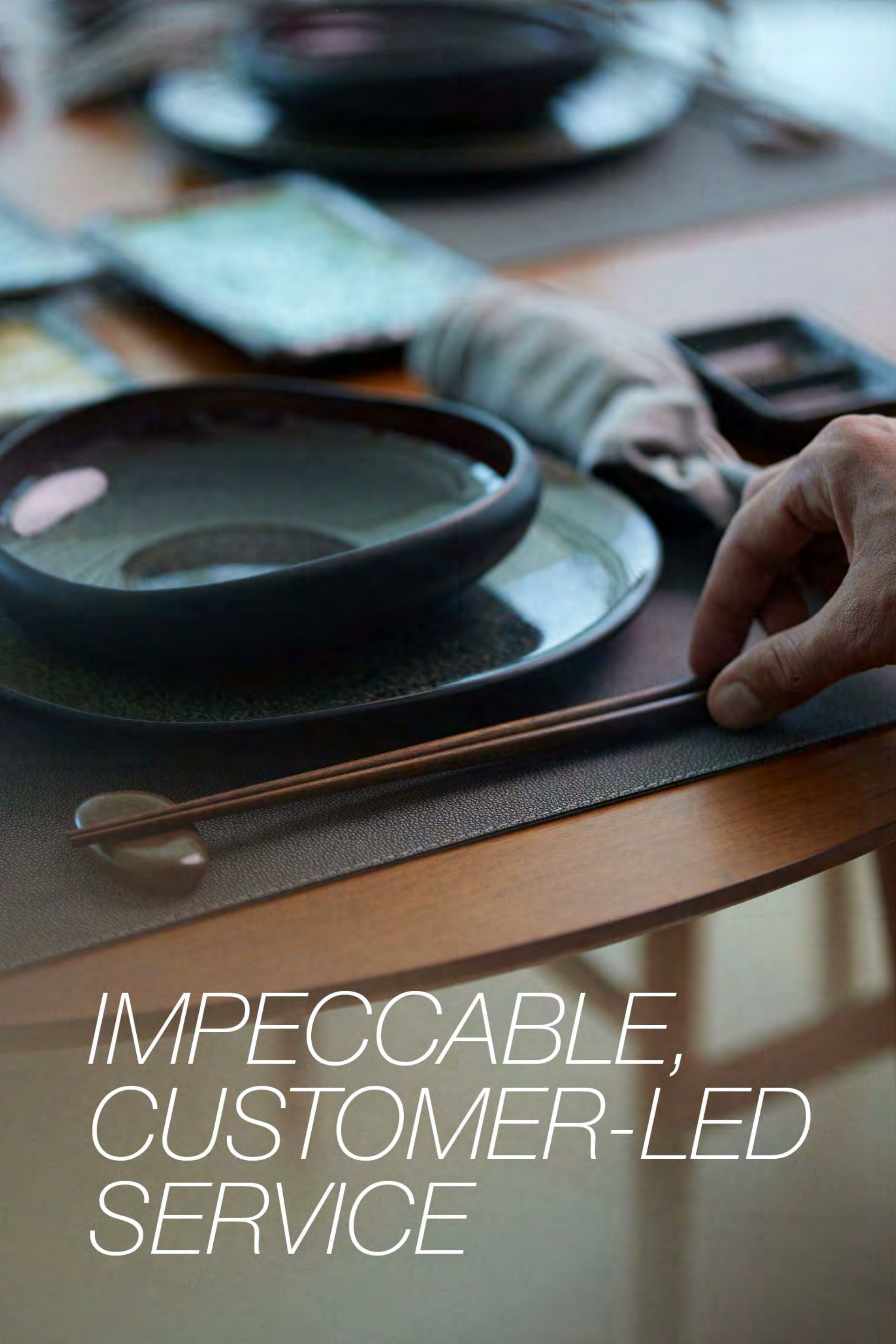
- Private grand lobby lounge
- Hi-tech gym
- Steam room and sauna
- Outdoor pool with cabanas
- Outdoor BBQ area, with extensive social areas
- Private dining room and chef's kitchen
- Spa facility at the Residences
- Treatment rooms at the Residence
- Indoor children's play area
- Cinema room
- Additional storage facilities
- Indoor Zen Garden yoga space
- Beach access
- Access to a range of F&B venues including a Nobu Restaurant

NOBU HOTEL
ABU DHABI

*THE ULTIMATE
RESIDENTIAL HAVEN*

*LUXURIOUS
LIVING
REDEFINED*





IMPECCABLE,
CUSTOMER-LED
SERVICE

In Nobu Residences Abu Dhabi, service is always personal, forever heartfelt. Here, particular inspiration has been found in the blend of ancient Emirati hospitality and Japanese traditions of omotenashi, a deep-seated, mindful philosophy that encompasses ceremonies such as ikaati tea blending and the offering of oshibori.

GENERAL AND À LA CARTE SERVICES

- 24hr concierge
- 24hr security surveillance
- Bell boy & doorman services
- House car with driver
- Valet parking
- Pool side towels and refreshments
- Cleaning and maintenance of all common areas
- Housekeeping services (daily or weekly)
- Fitness Centre membership
- Spa membership
- In-residence child-care
- Priority reservations for Nobu Hotel Abu Dhabi events
- Hair and beauty salon services
- Laundry services
- Chauffeur services
- Business centre services
- Daily newspaper delivery
- Floristry services
- Grocery delivery
- Dog walking and pet sitting

FOOD AND BEVERAGE (F&B) SERVICES

- Priority reservations at Nobu Restaurant Abu Dhabi
- Priority reservations for Nobu Hotel Abu Dhabi events
- Nobu Restaurant and in-room dining at the Hotel Residence event catering
- Nobu Restaurant chef available for cooking in resident's own home
- Bartender on demand at the Residences
- Food preparation and cookery classes

À la carte services are on demand and subject to additional charges.



A MASTERFUL BLEND OF TRADITION AND INNOVATION

Hospitality is the founding principle of every Nobu restaurant, hotel and residence. It begins with a dedication to craft, what the Japanese call omotenashi, and a commitment to hospitality. At Nobu Abu Dhabi, this reverence for tradition and custom is balanced by an embrace of the unexpected, an approach that reflects the drive and vision of Chef Nobu himself.



LIVE ALDAR

As one of the most trusted and recognised real estate lifestyle developers in the UAE, it's Aldar's duty to nurture wellbeing in every Abu Dhabi home. Which is why Aldar does more than build properties. We strive to shape communities that enrich people's lives, in homes that brim with health, happiness, and everything they love.





CHEF NOBU

Originating in Japan, Chef Nobu's journey to South America broadened his culinary horizons, inspiring unconventional flavors that now shape the essence of his worldwide Restaurants and Hotels. His humble reverence for ingredients remains the driving force behind his culinary innovation. This very philosophy is deeply woven into the essence of Nobu Residences Abu Dhabi.

NOBU LEADERSHIP

Robert De Niro and Chef Nobu's fateful encounter at Matsuhisa restaurant in Los Angeles sparked a lifelong partnership, leading to the iconic Nobu brand. Meir Teper, alongside De Niro, transitioned from the film industry to coalesce the Nobu Restaurant empire, establishing over 55 global venues.



DESIGN TEAM

STUDIO PCH

Séverine Tatangelo,
Founder and principal

Séverine Tatangelo believes great creative ideas can be universal and thrives in inventing spaces that celebrate the world's architectural heritage and its future. Since opening her own firm, Studio PCH, in Los Angeles in 2008, Séverine has created a stream of highly acclaimed commercial and private projects across the world. Soon after establishing her company, Tatangelo was tasked by Oracle co-founder Larry Ellison with helping create the famous Nobu Malibu Restaurant. Since then she has designed more than 20 Nobu projects worldwide. For her work on Nobu Residences Abu Dhabi, Séverine was inspired by the confluence of desert and water at this unique Saadiyat location, creating a design that plays with shadows and light and brings together principles of Zen philosophy with the natural elements of its surroundings.



DESERT INK

Duncan Denley,
Principal of landscaping

Duncan Denley is a chartered architect with more than 20 years' experience. He is committed to intelligent design that reduces environmental impact and construction budgets, and delivers innovative solutions. Since 2015, his UAE-based landscape architecture studio has created some of the most exciting places in the region, from rooftop pool hangouts and lush private residences to sustainable eco-hotels, desert parks and urban plazas. Working together with his own hand-picked creative team on Nobu Residences, Abu Dhabi, Duncan has created designs that focus on the natural beauty of its beachfront setting, blending hard and soft landscaping to provide a tranquil atmosphere across both day and night.



RSP ARCHITECTS

Michael Macgill,
Principal creative architect

Michael's designs for Nobu Residences Abu Dhabi focus on its role as a place of wellness and retreat, creating architecture that helps restore balance for all those who live here. As a hands-on creative director, Michael Macgill looks to integrate innovative design with the latest technology to define spaces that become legacies capable of lasting for generations. Michael's Singapore-based architectural firm, RSP, can call on more than 70 years of experience across hospitality, residential, master planning, and educational sectors. The company's notable projects in the Middle East include the St Regis Palm Tower in Dubai, Khalifa University, the Hindu Mandir Cultural Complex in Abu Dhabi, and the Armani Hotel in Diriyah Gate Development.





*FLOOR PLANS
& FLOOR PLATES*



NOBU HOTEL
ABU DHABI

NOBU HOTEL RESIDENCES

FLOOR PLANS

FLOOR PLANS
1 BEDROOM

TOTAL AREA 126 sqm



Disclaimer: This plan is reproduced for illustrative purposes as an example of a typical layout and Aldar makes no representation of warranty in relation to any of the information shown.

SCALE: 1:75
0m 5m

FLOOR PLANS

2 BEDROOMS + MAID ROOM

TOTAL AREA 249 sqm



Disclaimer: This plan is reproduced for illustrative purposes as an example of a typical layout and Aldar makes no representation of warranty in relation to any of the information shown.

FLOOR PLANS

3 BEDROOMS + MAID ROOM

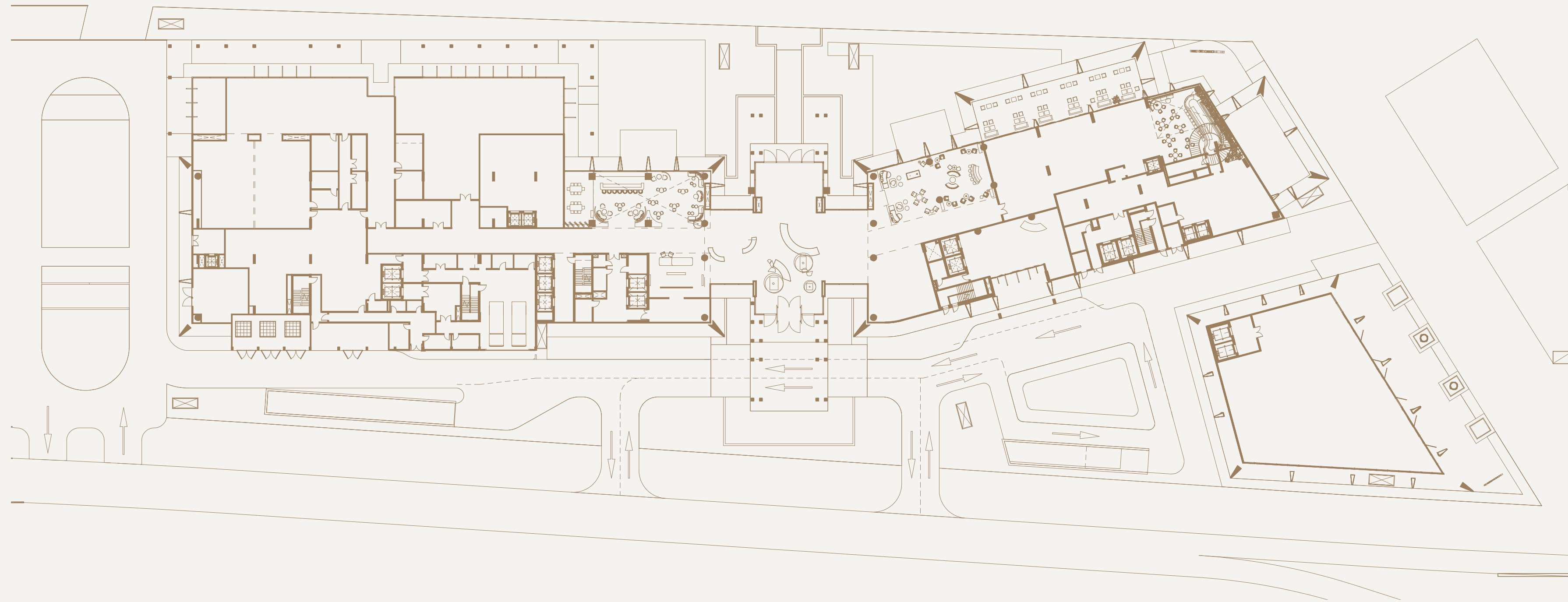
TOTAL AREA 398 sqm



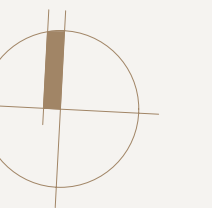
Disclaimer: This plan is reproduced for illustrative purposes as an example of a typical layout and Aldar makes no representation of warranty in relation to any of the information shown.

SCALE: 1:75
0m 5m

FLOOR PLATE
GROUND FLOOR

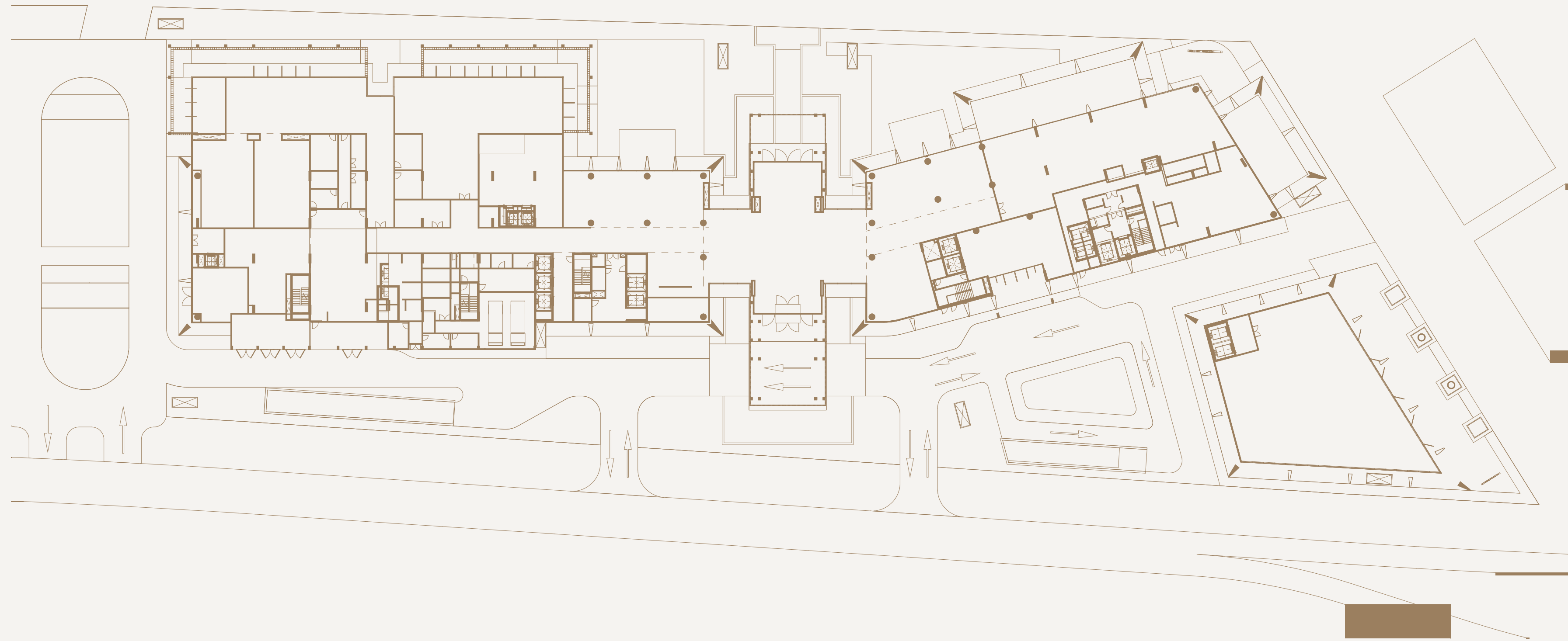


Disclaimer: This plan is reproduced for illustrative purposes as an example of a typical layout and Aldar makes no representation of warranty in relation to any of the information shown.

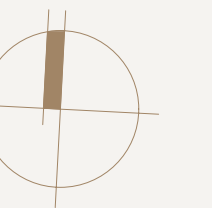


NORTH

FLOOR PLATE
MEZZANINE FLOOR

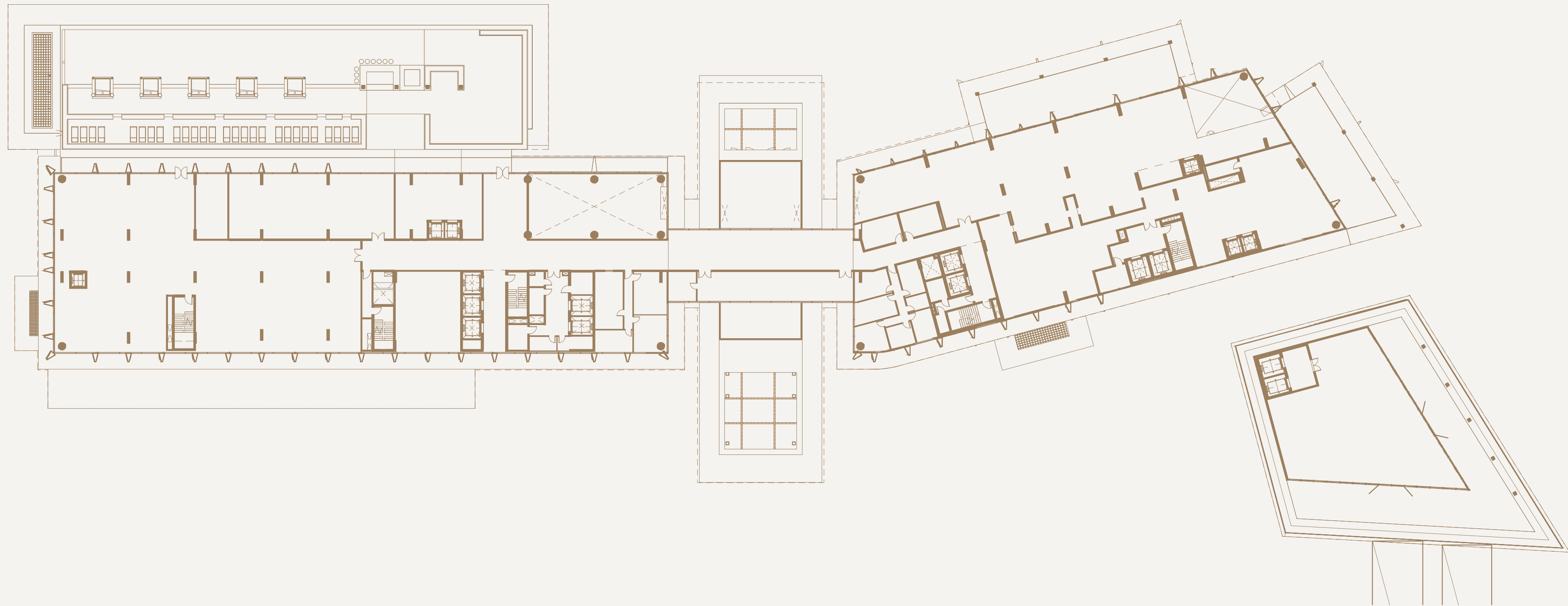


Disclaimer: This plan is reproduced for illustrative purposes as an example of a typical layout and Aldar makes no representation of warranty in relation to any of the information shown.

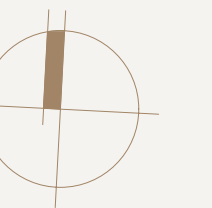


NORTH

FLOOR PLATES
1ST FLOOR

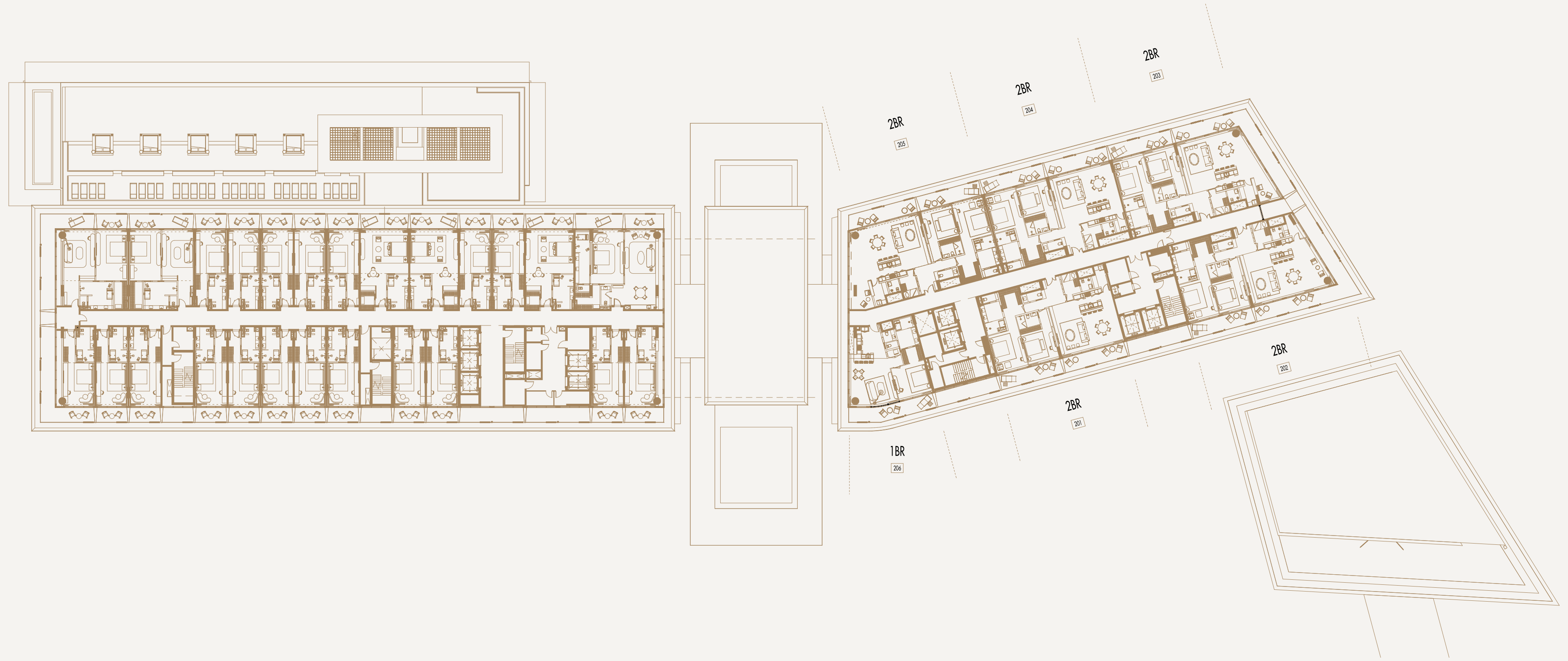


Disclaimer: This plan is reproduced for illustrative purposes as an example of a typical layout and Aldar makes no representation of warranty in relation to any of the information shown.

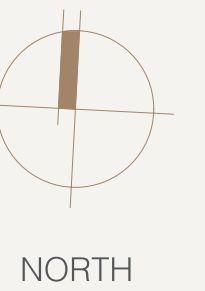


NORTH

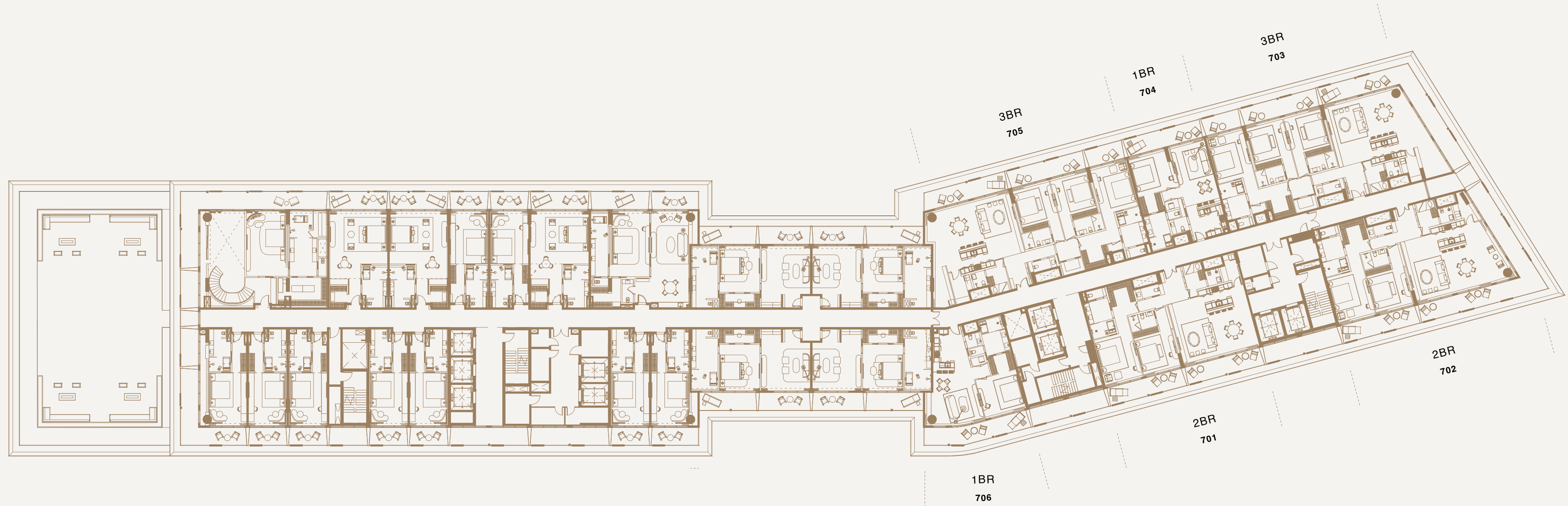
FLOOR PLATES
2ND - 6TH FLOOR



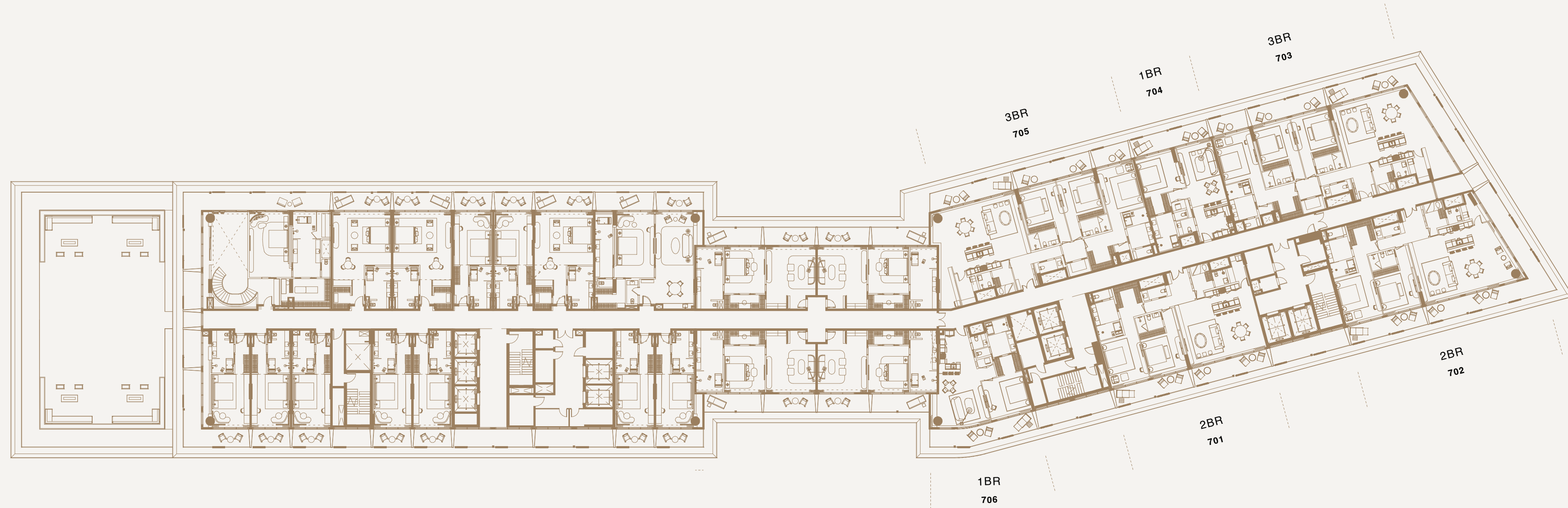
Disclaimer: This plan is reproduced for illustrative purposes as an example of a typical layout and Aldar makes no representation of warranty in relation to any of the information shown.



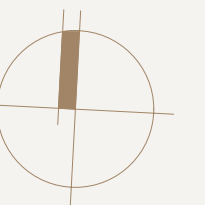
FLOOR PLATE
7TH FLOOR



FLOOR PLATE
8TH FLOOR



Disclaimer: This plan is reproduced for illustrative purposes as an example of a typical layout and Aldar makes no representation of warranty in relation to any of the information shown.



NORTH

*NOBU
RESIDENCES
FLOOR PLANS*



RESIDENCE BEACH

FLOOR PLANS
1 BEDROOM

TOTAL AREA 126 sqm



Disclaimer: This plan is reproduced for illustrative purposes as an example of a typical layout and Aldar makes no representation of warranty in relation to any of the information shown.

FLOOR PLANS

2 BEDROOMS + MAID ROOM

TOTAL AREA 249 sqm



Disclaimer: This plan is reproduced for illustrative purposes as an example of a typical layout and Aldar makes no representation of warranty in relation to any of the information shown.

FLOOR PLANS

3 BEDROOMS + MAID ROOM

TOTAL AREA 398 sqm



Disclaimer: This plan is reproduced for illustrative purposes as an example of a typical layout and Aldar makes no representation of warranty in relation to any of the information shown.

SCALE: 1:75
0m 5m

FLOOR PLANS
LOFT - 2 BEDROOMS

TOTAL AREA 446 sqm



LOWER LEVEL



LOWER LEVEL

Disclaimer: This plan is reproduced for illustrative purposes as an example of a typical layout and Aldar makes no representation of warranty in relation to any of the information shown.

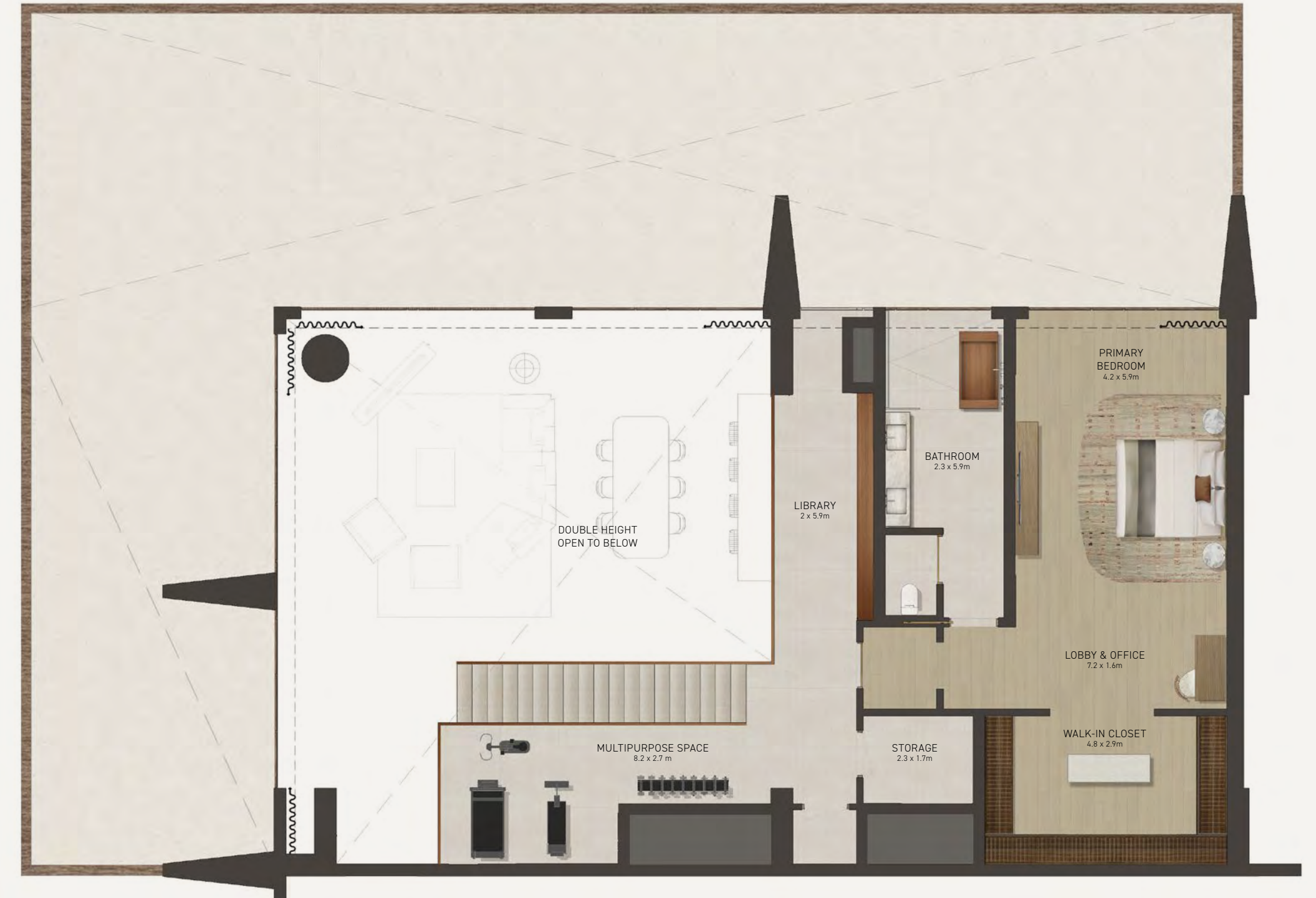
FLOOR PLANS

TERRACE LOFT - 2 BEDROOMS

TOTAL AREA 446 sqm



LOWER LEVEL



LOWER LEVEL

Disclaimer: This plan is reproduced for illustrative purposes as an example of a typical layout and Aldar makes no representation of warranty in relation to any of the information shown.

FLOOR PLANS

SKY VILLA - A & B

TOTAL AREA 1,110 sqm



Disclaimer: This plan is reproduced for illustrative purposes as an example of a typical layout and Aldar makes no representation of warranty in relation to any of the information shown.

FLOOR PLANS
PENTHOUSE A & B

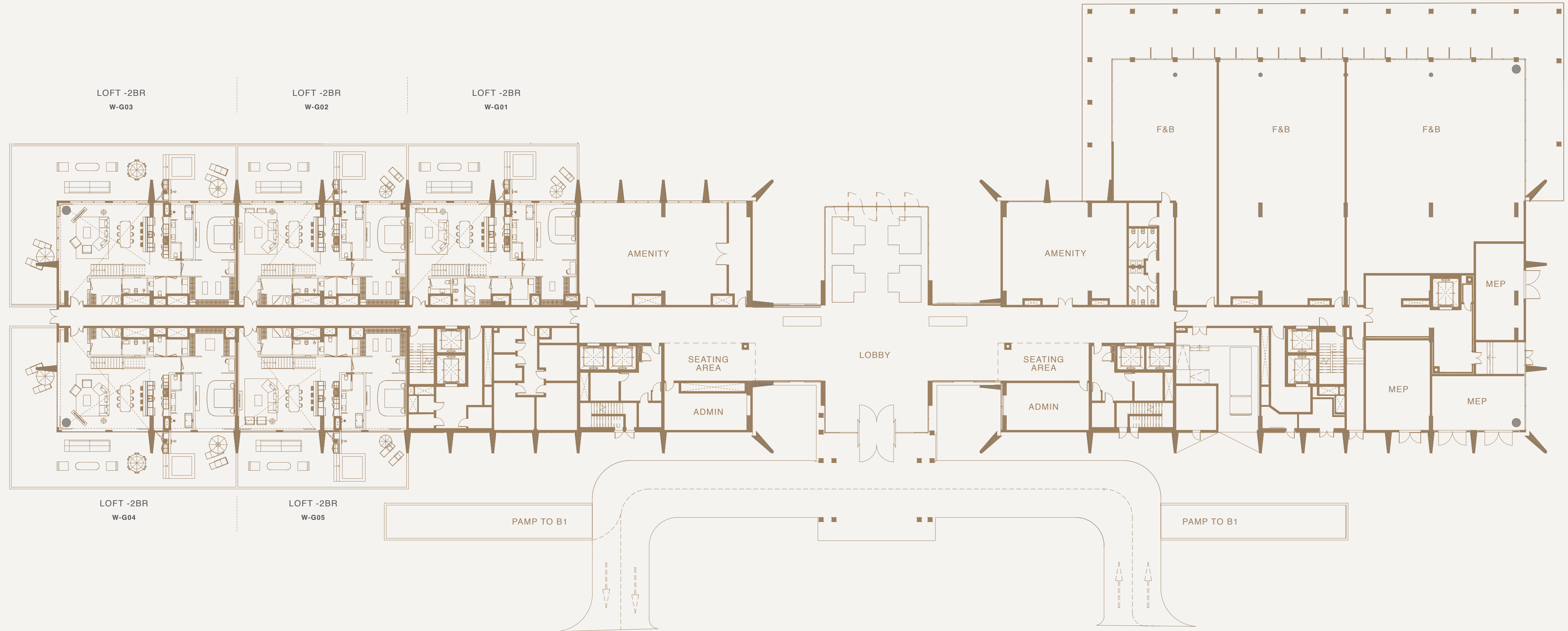
TOTAL AREA 1,377 sqm



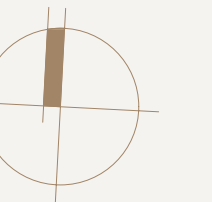
Disclaimer: This plan is reproduced for illustrative purposes as an example of a typical layout and Aldar makes no representation of warranty in relation to any of the information shown.

SCALE: 1:75
0m 5m

FLOOR PLATE
GROUND FLOOR

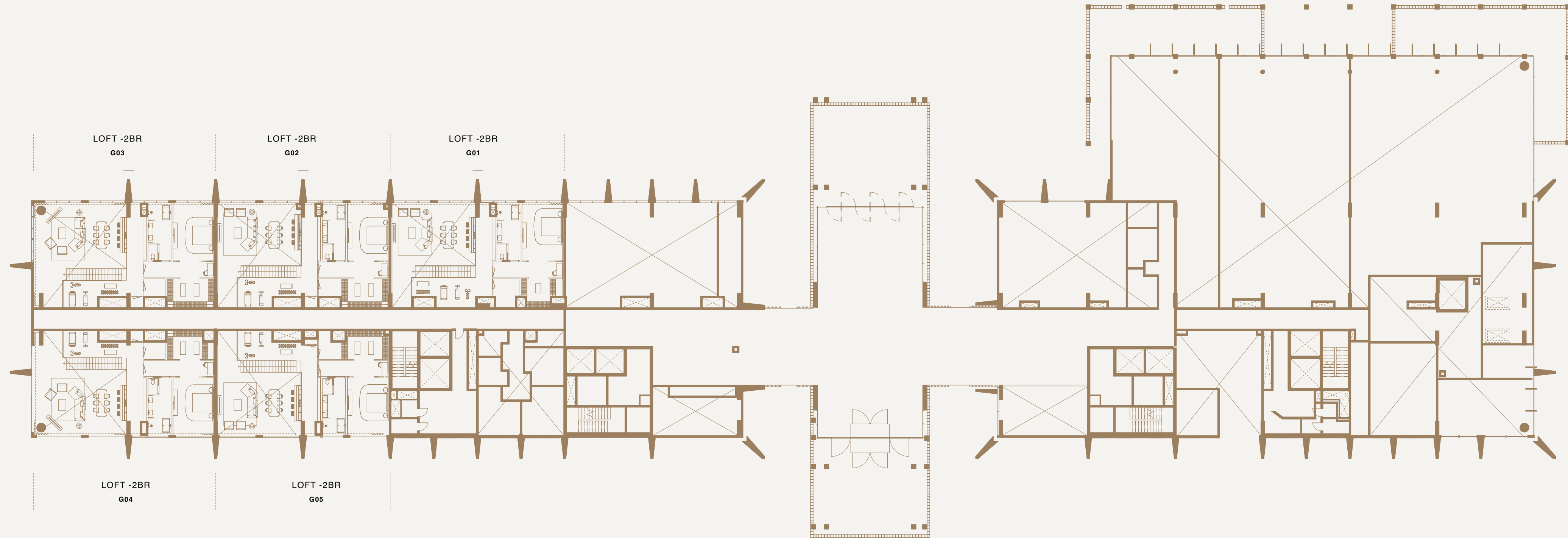


Disclaimer: This plan is reproduced for illustrative purposes as an example of a typical layout and Aldar makes no representation of warranty in relation to any of the information shown.

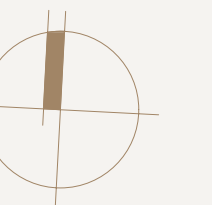


NORTH

FLOOR PLATE
MEZZANINE FLOOR

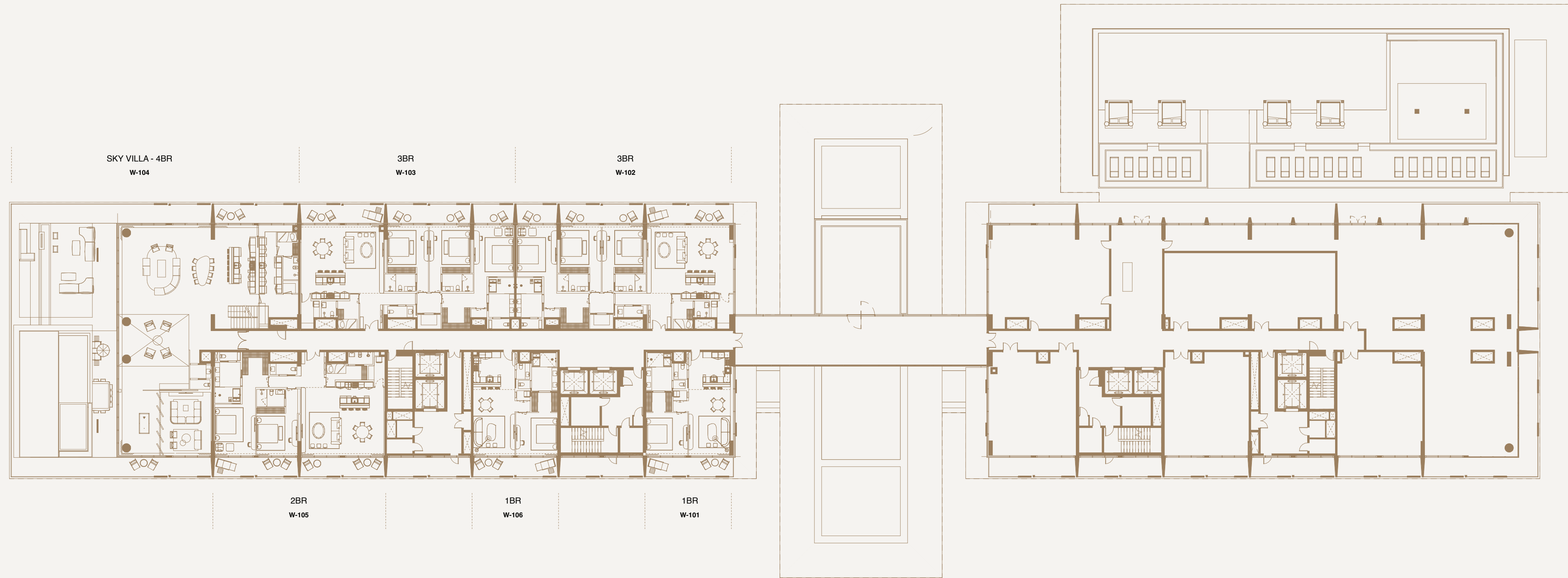


Disclaimer: This plan is reproduced for illustrative purposes as an example of a typical layout and Aldar makes no representation of warranty in relation to any of the information shown.

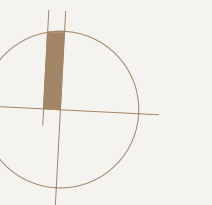


NORTH

FLOOR PLATE
1ST FLOOR

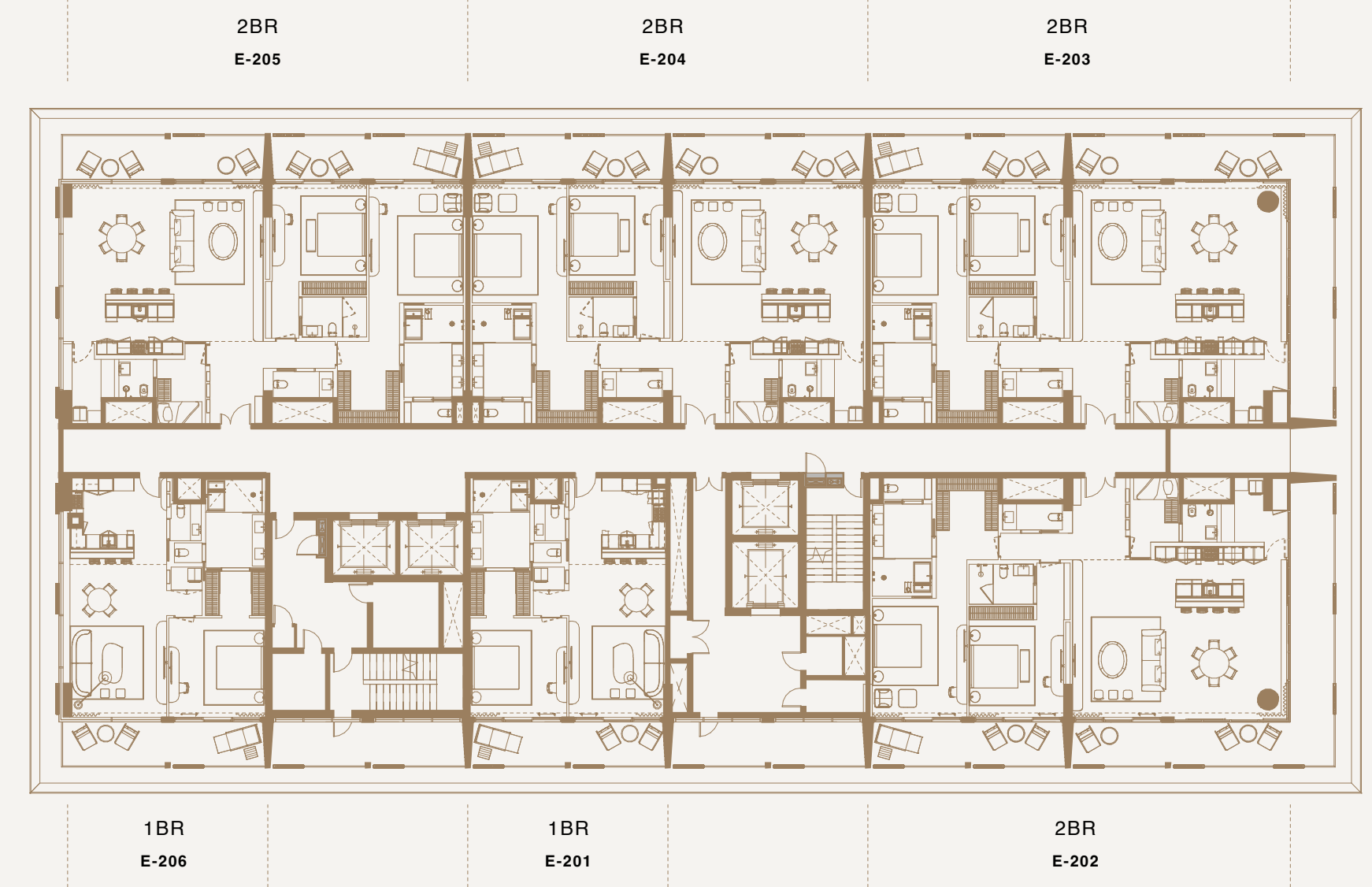
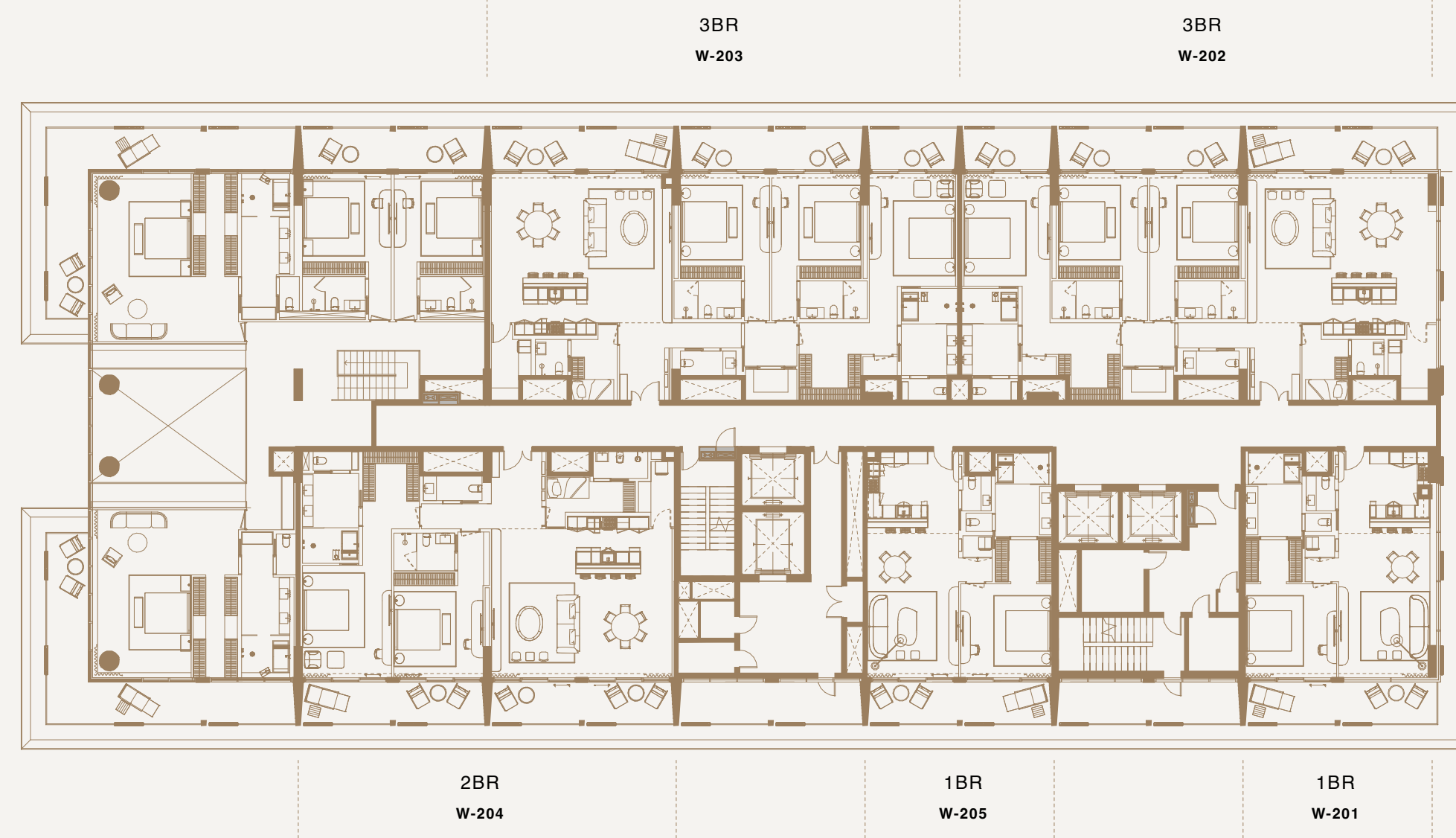


Disclaimer: This plan is reproduced for illustrative purposes as an example of a typical layout and Aldar makes no representation of warranty in relation to any of the information shown.

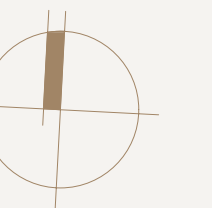


NORTH

FLOOR PLATE
2ND FLOOR

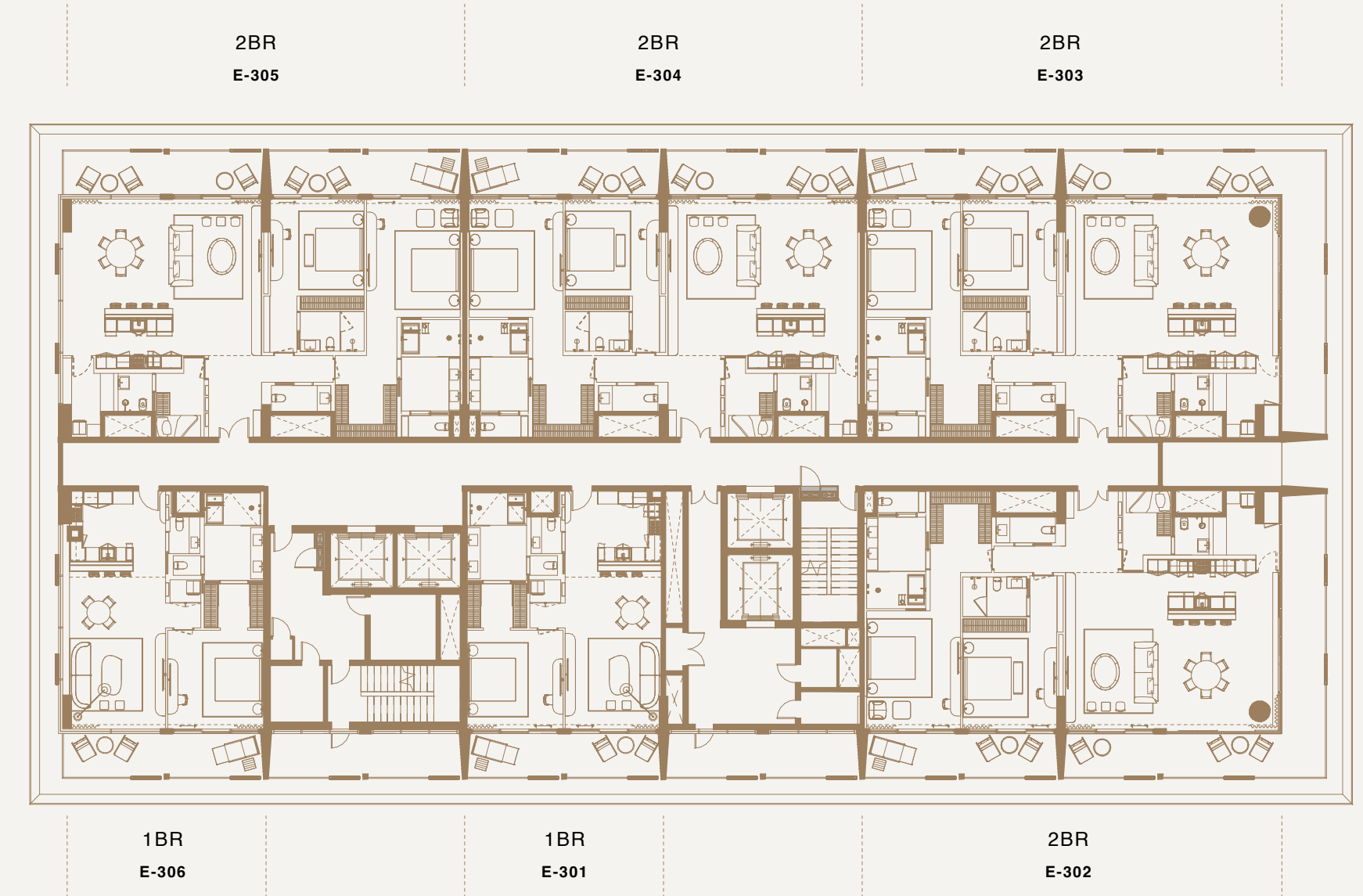
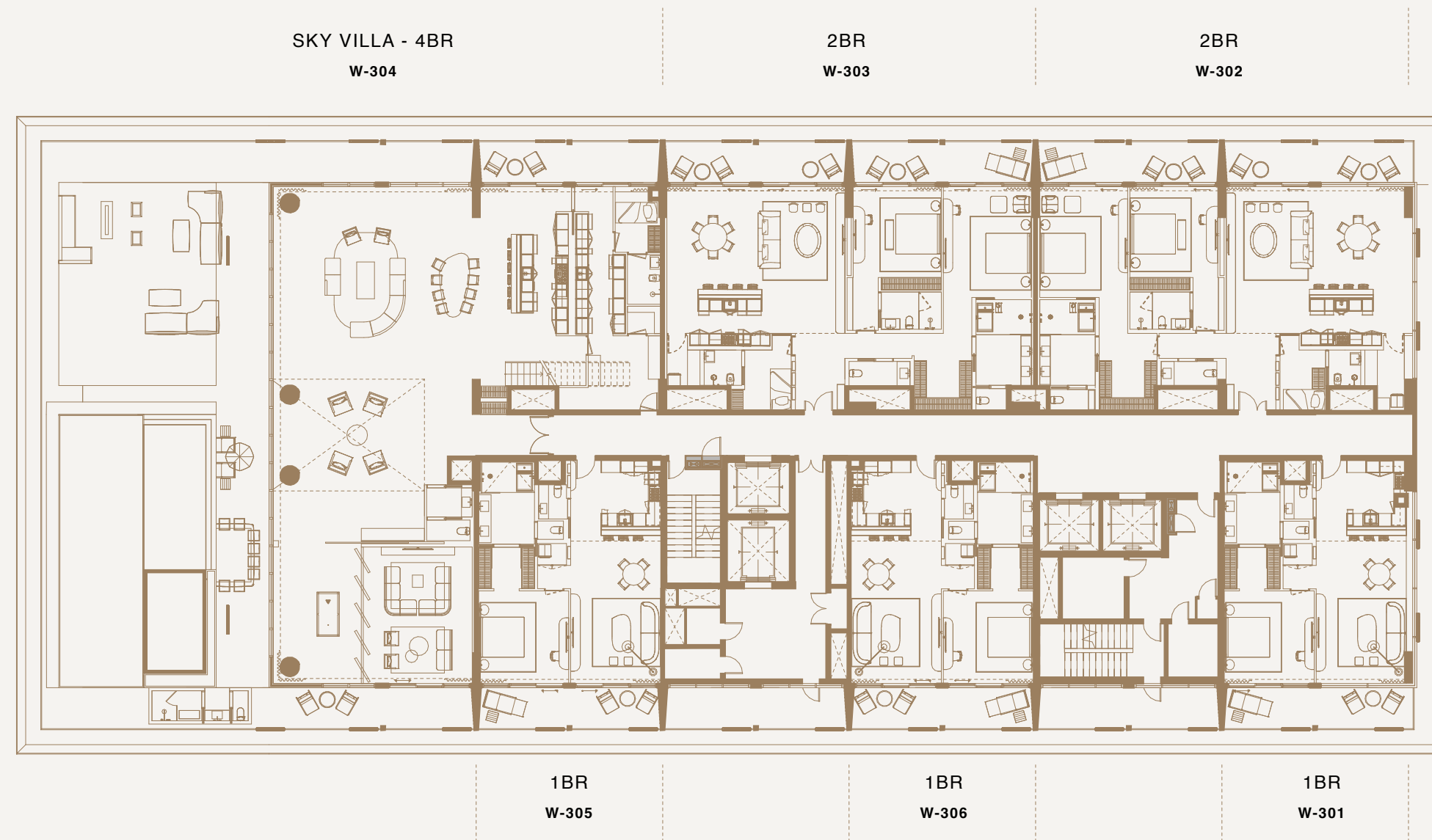


Disclaimer: This plan is reproduced for illustrative purposes as an example of a typical layout and Aldar makes no representation of warranty in relation to any of the information shown.

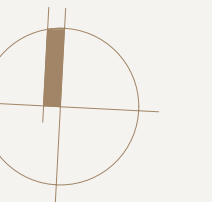


NORTH

FLOOR PLATE
3RD FLOOR

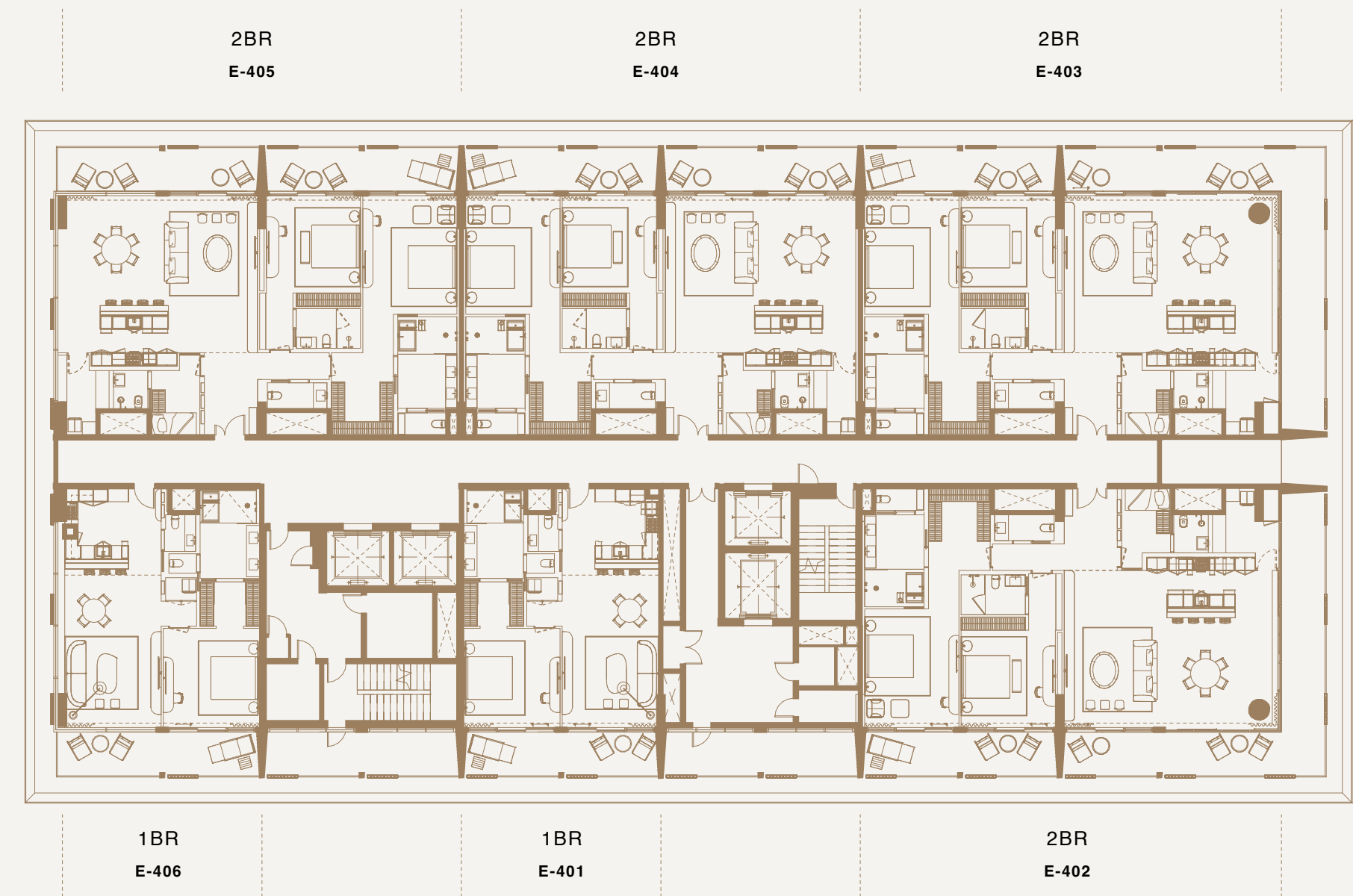
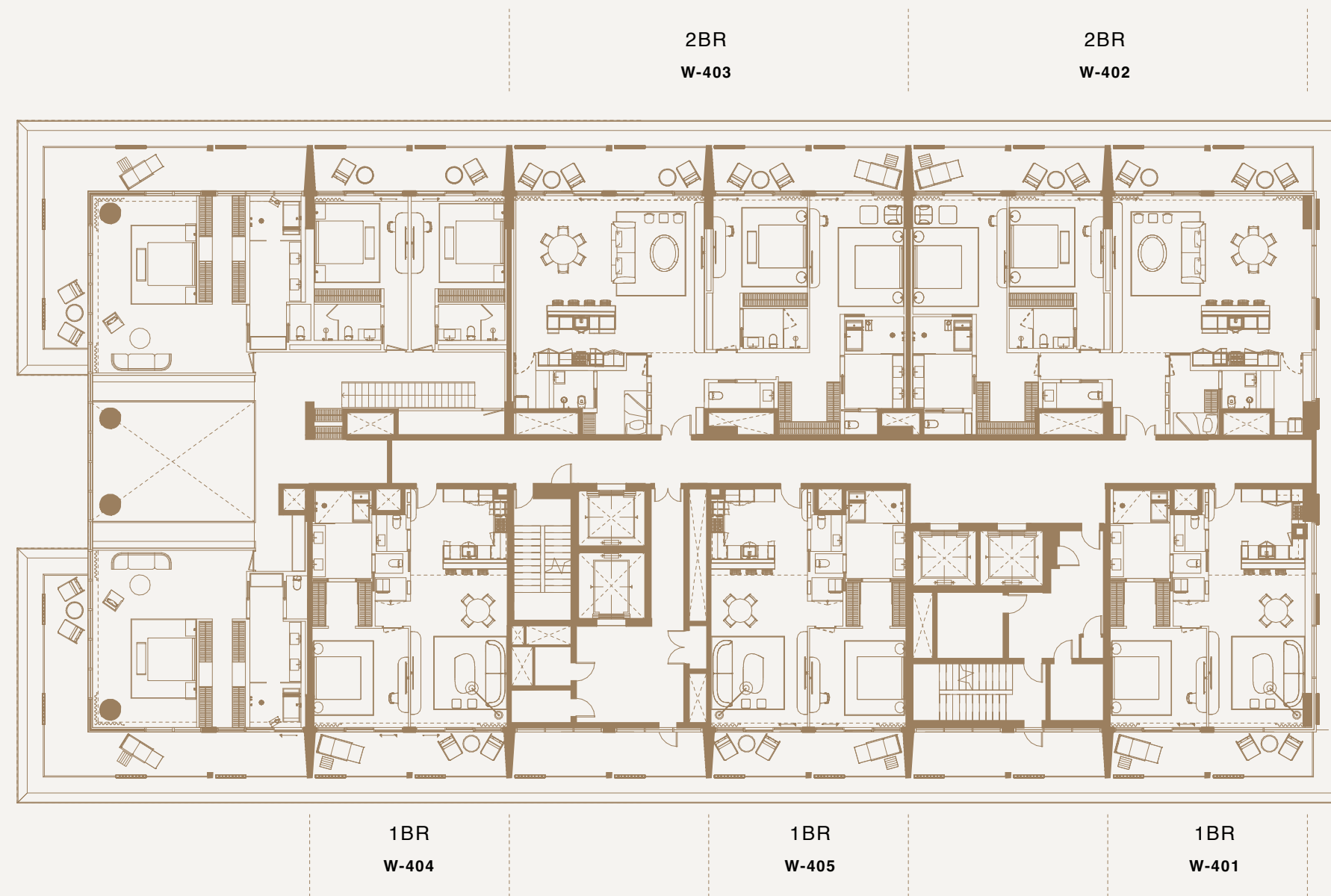


Disclaimer: This plan is reproduced for illustrative purposes as an example of a typical layout and Aldar makes no representation of warranty in relation to any of the information shown.

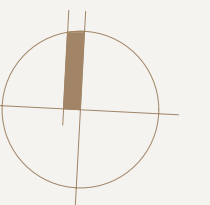


NORTH

FLOOR PLATE
4TH FLOOR



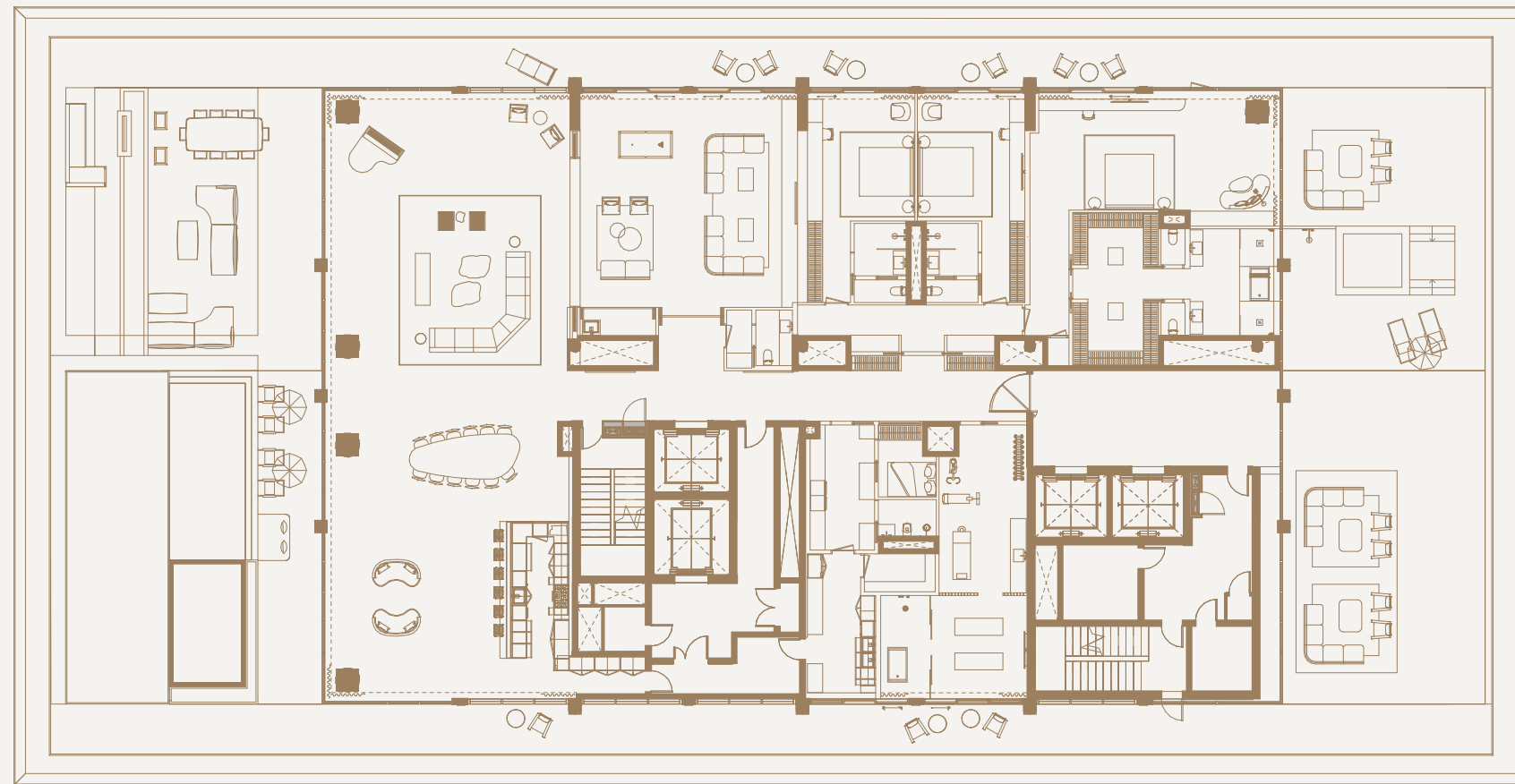
Disclaimer: This plan is reproduced for illustrative purposes as an example of a typical layout and Aldar makes no representation of warranty in relation to any of the information shown.



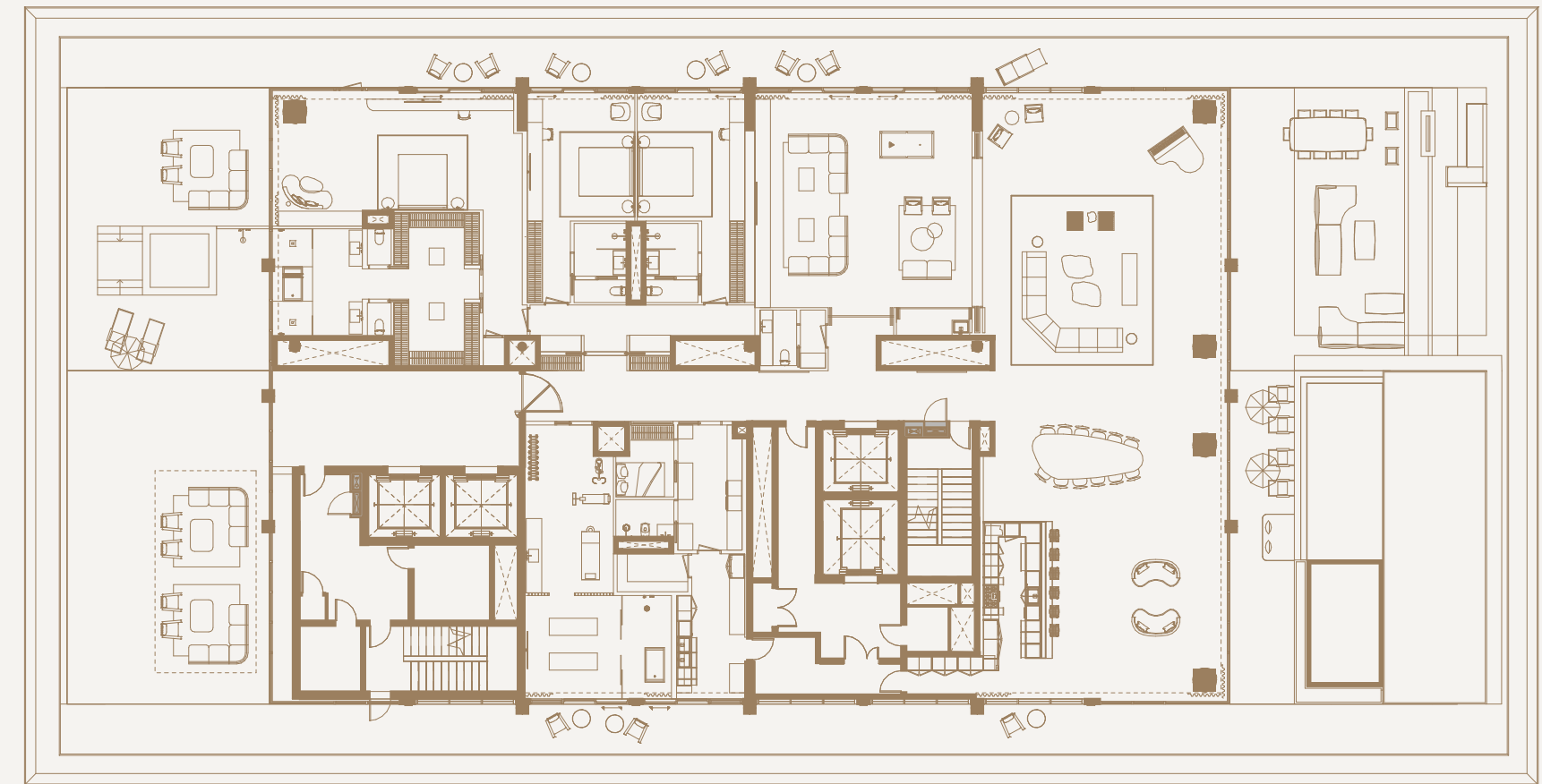
NORTH

FLOOR PLATE
5TH FLOOR

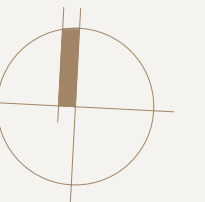
PENTHOUSE
E-502



PENTHOUSE
E-501



Disclaimer: This plan is reproduced for illustrative purposes as an example of a typical layout and Aldar makes no representation of warranty in relation to any of the information shown.



NORTH

THANK YOU

ALDAR SQUARE

Next to Yas Mall, Abu Dhabi

800 25327

International : +971 2 810 6400

sales@aldar.com

Working Hours

Mon – Sat

9:00 AM – 7:00 PM

DUBAI SALES CENTRE

Al Manara, Sheikh Zayed Road, Dubai

800 25327

International: +971 2 810 6400

sales@aldar.com

Working Hours

Mon – Sat

9:00 AM – 7:00 PM

DISCLAIMER:

The information on this brochure is presented as general information and no representation or warranty is expressly or impliedly given as to its accuracy, completeness, or correctness of the development or its surrounds. It does not constitute part of a legal offer or contract. Note that the renders were produced prior to completion of construction and are indicative only. Changes may be made during the development including areas, fittings, finishes, and specifications are subject to change without notice. The wardrobes and furniture are not included with any scale and should not be taken to indicate the final positions of power points, TV connections and the like. Prospective purchasers must rely on their own enquiries.

Nobu Residences Abu Dhabi are not owned, developed or sold by Nobu Hospitality LLC or its affiliates (Nobu Hotels). The developer uses the Nobu Hospitality trademarks and tradenames under a licence from Nobu Hospitality LLC, which has not confirmed the accuracy of any of the statements or representations made herein.



ALDAR.COM
800 ALDAR